



GOODHOME MORTGAGE PROPERTY LISTING

SEPTEMBER 2021



CO-OPERATIVE BANK

We are you



Residential
properties

APARTMENTS AT SABAKI OFF MOMBASA ROAD (P002)



LOCATION:

Sabaki, approximately 4.5Km off Mombasa Road from the Total Junction.

DESCRIPTION:

Bedsitters, studio apartments, 1 and 2 - bedroom apartments.

AMENITIES:

- Private club house
- Children's play area
- Shopping centre
- Basketball court
- Swimming pool
- Nursery school
- Access control system
- Bus park

STATUS OF THE PROJECT:

Nearing Completion

PRICE

TYPE	PLINTH AREA	PRICE	INDICATIVE RENT
Bedsitters	16 sqm	Ksh 1,155,000.00	Ksh 7,000.00
Studios	20 sqm	Ksh 1,760,000.00	Ksh 8,000.00
1 Bedroom	30 sqm	Ksh 2,530,000.00	Ksh 9,500.00
2 Bedroom	40 sqm	Ksh 3,190,000.00	Ksh 11,500.00
2 Bedroom (ensuite)	45 sqm	Ksh 3,630,000.00	Ksh 12,500.00

APARTMENTS IN SYOKIMAU (P003)



LOCATION:

Syokimau, approximately 800 metres off Mombasa Road before the Mlolongo Weighbridge.

DESCRIPTION:

1, 2 and 3 bedroom apartments.

AMENITIES:

- Master ensuite
- Open plan kitchen
- Laundry area
- Alarm system
- Perimeter wall
- Ample parking
- Children's play area
- Controlled access

STATUS OF THE PROJECT:

Ready for occupation

PRICE

TYPE	PLINTH AREA	PRICE	INDICATIVE RENT
2 Bedroom	74 sqm	Ksh 6,950,000.00	Ksh 28,000.00
3 Bedroom	96 sqm	Ksh 8,800,000.00	Ksh 35,000.00

APARTMENTS IN RACECOURSE AREA (P004)



LOCATION:

Racecourse Area, approximately 400 metres off Ngong Road.

DESCRIPTION:

Studios, 1 and 2 bedroom apartments.

AMENITIES:

- Rooftop garden
- Swimming pool
- Play area
- Commercial area
- Large central garden
- Ample parking
- Nursery school
- Borehole

STATUS OF THE PROJECT:

Ready for occupation

PRICE

TYPE	PLINTH AREA	PRICE	INDICATIVE RENT
Studios	25 sqm	Ksh 3,500,000.00	Ksh 25,000.00
Standard 1 Bedroom	37 sqm	Ksh 4,800,000.00	Ksh 35,000.00
Deluxe 1 Bedroom	40 sqm	Ksh 5,000,000.00	Ksh 38,000.00
2 Bedroom	72 sqm	Ksh 8,000,000.00	Ksh 45,000.00

APARTMENTS IN RUAKA (P005)



LOCATION:

Ruaka approximately 200 metres off Limuru Road.

DESCRIPTION:

2 & 3 Bedroom apartments all ensuite

AMENITIES:

- Cabro- paved parking
- Fitted kitchen
- Perimeter wall
- Adequate water storage
- Spacious lounge

STATUS OF THE PROJECT:

Ready for occupation

PRICE

TYPE	PLINTH AREA	PRICE	INDICATIVE RENT
2 Bedroom	92 sqm	Ksh 9,000,000	Ksh 45,000.00
3 Bedroom Duplex	186 sqm	Ksh 13,000,000	Ksh 60,000.00

APARTMENTS IN RUAKA (P006)



LOCATION:

Ruaka, approximately 200 metres off Limuru Road.

DESCRIPTION:

2 and 3 bedroom apartments.

AMENITIES:

- Cabro-paved driveways
- Ample parking
- Swimming pool
- CCTV
- Spacious balconies
- Green areas
- Electric fence
- Gym

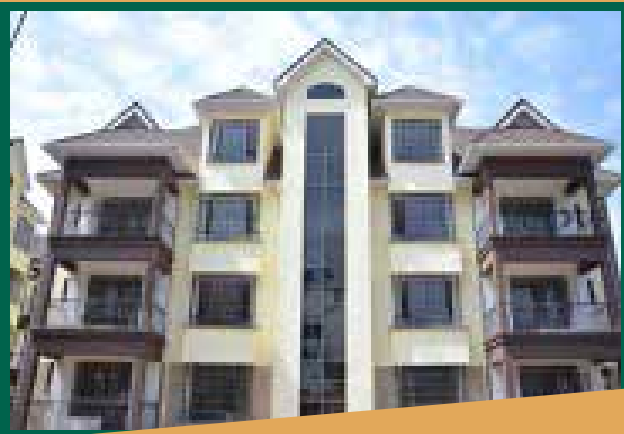
STATUS OF THE PROJECT:

Ready for occupation

PRICE

TYPE	PLINTH AREA	PRICE	INDICATIVE RENT
2 Bedroom	82 sqm	Ksh10,000,000.00	Ksh 46,000.00
3 Bedroom	104 sqm	Ksh11,000,000.00	Ksh 56,000.00

APARTMENTS ON WAIYAKI WAY (P008)



LOCATION:

Waiyaki Way, just past Kianda School and opposite CAK offices

DESCRIPTION:

2 & 3 Bedroom Apartments

AMENITIES:

- All Ensuite
- Basement Parking
- Entertainment Gazebo
- Gym
- Internet
- DSQ
- Children's Play Area

STATUS OF THE PROJECT:

Ready for occupation

PRICE

TYPE	PRICE	INDICATIVE RENT
2 Bedroom	Ksh 16,500,000	Ksh 60,000
3 Bedroom	Ksh 18,000,000	Ksh 75,000

APARTMENTS IN MOWLEM AREA (P010)



LOCATION:

Komarock Road, off Kangundo Road

DESCRIPTION:

1, 2 and 3 bedroom apartments.

AMENITIES:

- Ample parking
- Day care
- DSTV
- Commercial centre
- Gym
- Swimming pool
- Sentry unit (Guard station)
- Perimeter wall

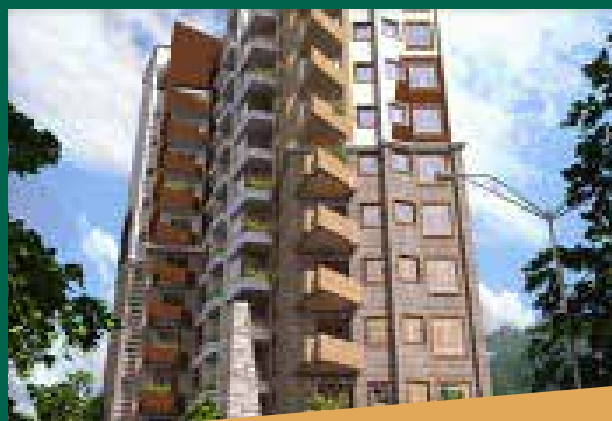
STATUS OF THE PROJECT:

Ready for occupation

PRICE

TYPE	OLD PRICE	PROMOTIONAL PRICE
1 Bedroom	Ksh 4,500,000.00	Ksh 3,800,000.00
2 Bedroom	Ksh 6,000,000.00	Ksh 5,000,000.00
3 Bedroom	Ksh 7,500,000.00	Ksh 6,000,000.00

APARTMENTS IN PARKLANDS (P012)



LOCATION:

Parklands, near The National Museums of Kenya

DESCRIPTION:

Luxurious apartments in Parklands

AMENITIES:

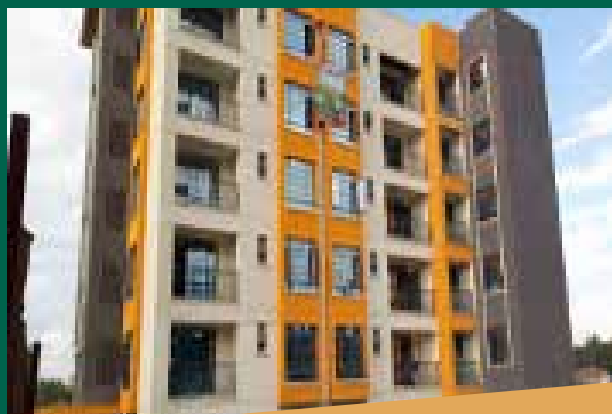
- Spacious lounge
- High speed lifts
- American kitchen
- Good location
- Spacious dining area
- Pantry
- Ample parking

STATUS OF THE PROJECT:

Under construction

TYPE	PLINTH AREA	PRICE
2 bedroom	95 sqm	Ksh 12,500,000

APARTMENTS IN NGONG TOWN (P019)



LOCATION:
Ngong Town

DESCRIPTION:
2 and 3 bedroom apartments (30 units total)

AMENITIES:

- Lounge cum dining room
- Kitchen with pantry
- Master ensuite
- Boundary wall
- Adequate water storage
- 1 parking slot per apartment

STATUS OF THE PROJECT:
Ready for Occupation

PRICE

TYPE	PLINTH AREA	PRICE
2 Bedroom	86 sqm	Ksh 6,000,000.00
3 Bedroom	103 sqm	Ksh 7,500,000.00

APARTMENTS AT VIPINGO (P020)



LOCATION:
Vipingo town

DESCRIPTION:
1, 2 & 3 bedroom apartments (330 units)

AMENITIES:

- Paved roads
- Security patrols
- Playgrounds
- Ample parking
- Swimming pool
- Perimeter fence
- Kindergarten
- Reliable power connection
- CCTV surveillance

STATUS OF THE PROJECT:
Ready for occupation

PRICE

TYPE	PLINTH AREA	PRICE
3 Bedroom	75 sqm	Ksh 4,600,000.00

STAND ALONE HOUSES AT VIPINGO (P021)



LOCATION:
Vipingo Town

DESCRIPTION:
Two bedroom bungalows (90 units) and three bedroom maisonettes (62 units).

AMENITIES:

- All en-suite
- Laundry area
- Parking for 2 cars
- Terraces
- Boundary wall
- Adequate water storage

STATUS OF THE PROJECT:
Under construction

PRICE

TYPE	PLINTH AREA	PRICE
2 Bedroom (All en-suite) Bungalows	155 sqm	Ksh 13,000,000.00
3 Bedroom (All ensuite) Maisonette	210 sqm	Ksh 17,000,000.00

APARTMENTS AT SABAKI (P023)



LOCATION:

Sabaki off Mombasa Road.

DESCRIPTION:

Studio apartments

AMENITIES:

- Rooftop
- Green areas and gardens
- Ample parking
- Perimeter walling
- Controlled access
- Laundry area
- Play area
- Cabro paved walkways

STATUS OF THE PROJECT:

Ready for occupation

PRICE

TYPE	PLINTH AREA	PRICE	INDICATIVE RENT
Studio	18 sqm	Ksh 2,600,000.00	Ksh 10,000.00
Standard Studio	21 sqm	Ksh 3,400,000.00	Ksh 12,000.00
Deluxe studio	28 sqm	Ksh 3,950,000.00	Ksh 17,000.00

ONE APARTMENT UNIT IN NYALI (P025)



LOCATION:

Nyali, approximately 600M off Links Road

DESCRIPTION:

3 bedroom apartment on first floor

AMENITIES:

- Master en-suite
- Lounging area
- Laundry area
- Ample parking
- Borehole on site
- Spacious rooms
- Detached servants quarter
- Activated rooftop (Terrace)
- Controlled access

STATUS OF THE PROJECT:

Ready for occupation

PRICE

Ksh 13,000,000.00

MAISONETTE IN SOUTH C (P027)



LOCATION:

South C

DESCRIPTION:

4 bedroom maisonette, complete with servants' quarters

AMENITIES:

- Master ensuite
- Perimeter wall
- Backyard and front yard
- Electric fence
- Separate dining area
- Ample water storage

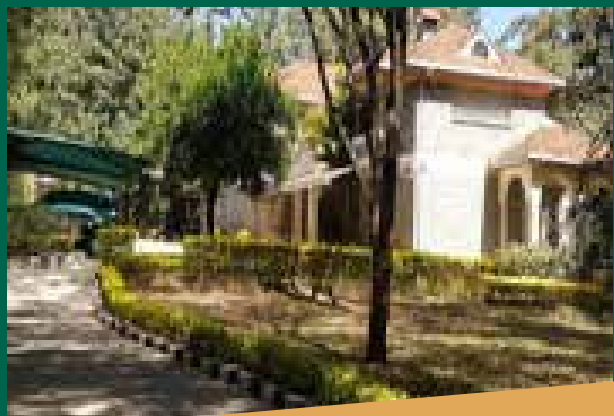
STATUS OF THE PROJECT:

Ready for occupation

PRICE

Ksh 20,000,000.00

MANSION IN HARDY, KAREN (P030)



LOCATION:

Hardy Area, Karen

DESCRIPTION:

This is a double storey, 4 bedroom, all en-suite town house measuring 520 sqm, developed on half an acre.

AMENITIES:

- En-suite domestic servants' quarters
- Landscaped gardens
- Store block
- Gazebo and gate house
- Connection to electricity and water mains

STATUS OF THE PROJECT:

Ready for occupation

PRICE

Ksh 130,000,000.00 (negotiable)

SERVICED APARTMENT BLOCK IN LAVINGTON (P031)



LOCATION:

Lavington, Nairobi.

DESCRIPTION:

Fully furnished & serviced apartments comprising of 1- & 2-bedroom apartments developed on 0.755 of an acre

AMENITIES:

- Fully furnished bedroom
- Manicured gardens
- Paved walk ways
- Gym and spa
- Back-up generator
- Electric fence
- Fully equipped kitchen and restaurant
- Rooftop swimming pool
- Ample basement parking
- Lift to all floors
- Perimeter wall
- Controlled access

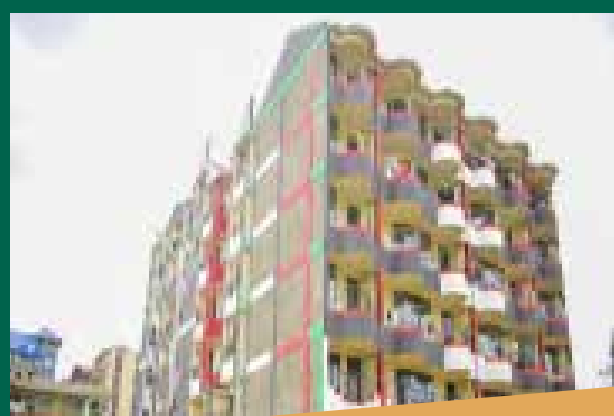
STATUS OF THE PROJECT:

Ready for occupation

PRICE

Ksh 675,000,000.00 (negotiable)

APARTMENT BLOCK AT KAHAWA (P032)



LOCATION:

Kahawa Wendani, 200M from Thika SuperHighway

DESCRIPTION:

A block of apartments comprised of Studios, 1 Bedrooms and 2 Bedrooms.

AMENITIES:

- Constant water supply
- Fitted kitchen
- Access to public transport

STATUS OF THE PROJECT:

Ready for occupation and has tenants.

PRICE Ksh 130,000,000

TYPE	UNITS	INDICATIVE RENT
Studios	82	Ksh 10,000.00
1 Bedroom	6	Ksh 15,000.00
2 Bedroom	16	Ksh 20,000.00

BLOCK OF APARTMENTS AT INDIES, ELDORET (P033)



LOCATION:

Eldoret, 200 meters off Eldoret - Malaba highway

DESCRIPTION:

Four story building comprised of 1 bedroom (1 unit) and 2 bedroom (15 units) flats.

AMENITIES:

- Master ensuite
- Kitchen cabinets
- Murram access road
- Newly constructed
- Ready tenants
- Close proximity to Eldoret town

STATUS OF THE PROJECT:

Ready for occupation and has tenants.

PRICE

Ksh 50,000,000

Expected monthly rental income - Ksh 132,000

APARTMENTS IN RUNDA (P036)



LOCATION:

Within the mixed use development of Two Rivers Mall

DESCRIPTION:

It is comprised of 1br,2br,3br,3br + Dsq Apartments & 3 Br Duplex Villas

AMENITIES:

- Roof garden
- Swimming pool
- Gym
- Mini-parks
- Children playing area
- 7 - aside football pitch
- Recreational centre

STATUS OF THE PROJECT:

Under construction

PRICE

TYPE	PLINTH AREA	PRICE
Prices for apartments		
1 Bedroom	57 sqm	Ksh 8,500,000.00
2 Bedroom	90 sqm	Ksh 12,300,000.00
3 Bedroom	102 sqm	Ksh 14,400,000.00
3 Bedroom + DSQ	117 sqm	Ksh 16,500,000.00
Prices for Duplex Villa Units		
3 Bedroom + DSQ Type A Not Cascading	124 sqm	Ksh 18,190,000.00
3 Bedroom + DSQ Type B Cascading	140 sqm	Ksh 21,400,000.00
3 Bedroom + DSQ Type C Not Cascading	150 sqm	Ksh 23,000,000.00
3 Bedroom + DSQ Type D Cascading	158 sqm	Ksh 24,500,000.00

APARTMENTS IN RUNDA (P037)



LOCATION:

Within the mixed use development of Two Rivers Mall

DESCRIPTION:

1,2 and 3 Bedroom apartments for sale

AMENITIES:

- Internet provision
- DSTV connection
- Business centre with virtual offices
- Standby generator
- CCTV cameras
- Jacuzzi
- Soccer pitch
- Swimming pool
- Tennis court
- Yoga studio
- High speed lifts
- Video door phone

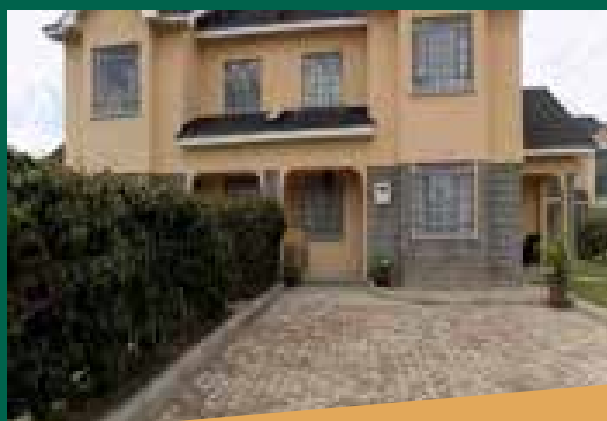
STATUS OF THE PROJECT:

Under construction

PRICE

TYPE	INDICATIVE PRICE
1 Bedroom	Ksh 16,000,000
2 Bedroom	Ksh 23,000,000
3 Bedroom	Ksh 30,000,000

MAISONETTES IN KITENGELA (P038)



LOCATION:

Along Namanga Road, just 8 km from Kitengela Town in a quiet and serene environment

DESCRIPTION:

Spacious 3 & 4-bedroom maisonettes plus DSQ ready for occupation

AMENITIES:

- Kitchen with pantry
- Swimming pool
- Children playground
- Borehole
- Gym
- Cloakroom
- Electric fence
- Biodigester plant

STATUS OF THE PROJECT:

Ready for occupation

PRICE

TYPE	PLINTH AREA	PRICE	INDICATIVE RENT
3 Bedroom	166 sqm	Ksh 11,000,000	Ksh 35,000
4 Bedroom	185 sqm	Ksh 12,000,000	Ksh 45,000

MAISONETTE ON MOMBASA ROAD (P039)



LOCATION:

Along Mombasa Road

DESCRIPTION:

4-bedroom master ensuite maisonette with a DSQ

AMENITIES:

- Separate dining area
- 3 bathrooms
- Adequate water storage
- Kitchen with pantry
- Parking for 2 cars
- 24/7 security manned entrance gate
- Laundry area
- Children's play area
- Cloakroom

STATUS OF THE PROJECT:

Ready for occupation

PRICE

TYPE	PLINTH AREA	PRICE	INDICATIVE RENT
4 Bedroom	160 sqm	Ksh 16,000,000	Ksh 50,000

APARTMENT IN KILIMANI (P042)



LOCATION:

Kilimani along Kayahwe Road

DESCRIPTION:

3 Bedroom master ensuite apartment

AMENITIES:

- Guest cloakroom
- Lounge cum dining area
- Borehole
- Estate boundary with electric fence
- Kitchen with pantry
- Laundry area
- Ample parking slots
- Ample water storage

STATUS OF THE PROJECT:

Ready for occupation

PRICE

Ksh 13,500,000
Indicative Rent – Ksh 75,000

TOWN HOUSE IN SYOKIMAU (P044)



LOCATION:

Along Mombasa Road – At Syokimau

DESCRIPTION:

4 Bedroom semi-detached with SQ

AMENITIES:

- En-suite guest bedroom
- Guest cloakroom
- Individual title deed
- Estate boundary with electric fence
- Extra storage space
- 2 private parking slots
- Laundry area
- Backyard
- Borehole

STATUS OF THE PROJECT:

Ready for occupation

PRICE

Ksh 11,500,000

PROPERTY IN LOWER KAREN PLAINS (P046)



LOCATION:

Lower Karen Plains

DESCRIPTION:

5-bedroom Maisonette, sitting on ½ an acre

AMENITIES:

- 4 bathrooms
- Manicured gardens
- Spacious lounge
- Ample parking
- DSQ
- Controlled access
- Ample water storage

STATUS OF THE PROJECT:

Ready for occupation

PRICE

Ksh 58,000,000

HOTEL APARTMENTS IN MTWAPA, KILIFI COUNTY (P048)



LOCATION:

Mtwapa next to club Tropicana about 100 meters off Malindi Mombasa Road with an exit directly opposite National Bank of Kenya premises

DESCRIPTION:

Hotel complex ready for daily bookings

AMENITIES:

- Master en-suite
- Lounging area
- Laundry area
- Ample parking
- Borehole on site
- Spacious rooms
- Detached servants quarter
- Activated rooftop (Terrace)
- Controlled access

STATUS OF THE PROJECT:

Ready for Rentals

PRICE

Ksh 68,000,000.00

BUNGALOW IN MLOLONGO (P049)



LOCATION:

Along Mombasa Road – At Mlolongo

DESCRIPTION:

3 Bedroom Master ensuite Bungalow

AMENITIES:

- En-suite Master Bedroom
- Individual title deed
- Estate boundary with electric fence
- Kitchen fitted with Kitchen cabinets
- 2 private parking slots
- Laundry area
- Borehole

STATUS OF THE PROJECT:

Ready for occupation

PRICE

Ksh 9,000,000

A BLOCK OF APARTMENTS IN NYANCHWA AREA KISII (P050)



LOCATION:

Kisii county, Nyanchwa

DESCRIPTION:

5 story block of flats comprising of 1 unit of shop, 5 units of 1 bedroom flats & 9 units of 2 bedroom flats on 0.0711 of an acre

AMENITIES:

- Mains for electricity & water connected to the property
- Drainage is to septic tank/sewer line
- Area is covered by cellular mobile networks
- Floors are finished in ceramic tiles
- Stone perimeter wall
- Ready tenants
- Close proximity to Kisii town
- Burglar proof windows

STATUS OF THE PROJECT:

Ready for occupation

PRICE

Ksh 24,000,000

INDICATIVE RENT

Ksh 177,000

APARTMENTS IN KILELESHWA (P051)



LOCATION:

Kileleshwa, off Othaya Road

DESCRIPTION:

Elegant studios, one & two bedroom luxury apartments makes each apartment boasts of ultra-comfortable and spacious interior that make for a homely interior

AMENITIES:

- Solar water heaters
- Backup generator
- High speed lifts
- Rooftop lounge deck
- Video Intercom
- Fitted kitchen with oven, extractor & microwave
- Equipped gym
- Borehole
- Electric fence

STATUS OF THE PROJECT:

Construction ongoing

PRICE

TYPE	PRICE FROM
Studios	Ksh 7,661,000
1 Bedroom	Ksh 9,139,000
2 Bedroom	Ksh 16,783,000

GATED COMMUNITY IN KISAJU (P052)



LOCATION:

Kisaju, off Namanga Road

DESCRIPTION:

A modern estate sitting on 32 Acres comprising of 1,2 & 3 Bedroom apartments and Townhouses with & without DSQ to complement your contemporary lifestyle in a tranquil environment away from the flurry of the city

AMENITIES:

- Ample parking
- Cabro paved Drive ways
- Two Boreholes
- Children Play ground
- Jogging Track
- Solar water heater
- Electric Fence
- Retail and commercial center

Apartment Prices

UNIT	PRICE
1 Bedroom	Ksh 1,906,000
2 Bedroom	Ksh 3,200,000
3 Bedroom	Ksh 3,800,000

Prices for Townhouses

DESCRIPTION	PRICE (KSH)
3 Bedroom without DSQ	Ksh 5,800,000
3 Bedroom with DSQ	Ksh 6,200,000

Apartments in Kitisuru (P053)



LOCATION:

Off Lower Kabete Road

DESCRIPTION:

3 Bedroom Apartments

AMENITIES:

- Ample parking
- Borehole
- Master En-suite
- Lifts
- Cabro paved compound
- Perimeter wall with electric fence

STATUS OF THE PROJECT:

Ready for occupation

PRICE

TYPE	PRICE FROM
3 bedrooms + SQ + Dining (125 m²)	Ksh 10,900,000
3 bedroom (112 m²)	Ksh 9,500,000

APARTMENTS IN RUAKA (P054)



LOCATION:

Ruaka

DESCRIPTION:

2 and 3 Bedroom apartments

AMENITIES:

- Borehole
- Solar water heating system
- Roof garden
- Clothes drying yard on roof
- Lift
- Children's play area
- Electric fence along the perimeter
- CCTV and backup generator for security
- Ample parking

STATUS OF THE PROJECT:

Ready for occupation

TYPE	PRICE	INDICATIVE RENT
2 bedrooms	Ksh 7,500,000	Ksh 35,000
3 bedroom	Ksh 8,900,000	Ksh 40,000

MAISONETTE IN SYOKIMAU (P055)



LOCATION:

Syokimau, 900m from the tarmac

DESCRIPTION:

The house has been converted into single rooms, bedsitters, and a one bedroom for rental.

STATUS OF THE PROJECT:

Ready for occupation

PRICE

Ksh 30,000,000.00

Maisonette Along Kiambu road (P056)



LOCATION:

Located along Kiambu Road, Edenville Estate;

DESCRIPTION:

3 bedroom maisonette master ensuit with Dsq

AMENITIES:

- Gated community
- 24hr security
- Cabro paved walkways
- Parking for 2 cars and visitors parking
- Covered Garden Terrace

PRICE

TYPE	PRICE FROM
3 bedrooms + DSQ (1710 Sqft)	Ksh 20,000,000



Commercial
properties

OFFICE SPACE IN UPPER HILL (P007)



LOCATION:

Upper Hill Area

DESCRIPTION:

An Ultra-modern, state of the art, 18 storey office block set on 1 acre

AMENITIES:

- Conference facilities
- CCTV Backed security
- High speed Lifts
- Banking Hall
- Access control
- ICT Structured Cabling
- Generator
- 164 Parking Bays

STATUS OF THE PROJECT:

Ready for Occupation

PRICE

Ksh 145,000 per sqm and Ksh 1,000,000 per Parking slot

OFFICE SPACE IN WESTLANDS (P022)



LOCATION:

Westlands, off Waiyaki Way

DESCRIPTION:

420 sqm of executive office space that is well maintained.

AMENITIES:

- 6 High speed lifts
- 24 hour security
- Boundary Wall
- Electric fence
- Full back-up generator
- 6 Parking slots
- Visitors' Parking
- Reliable water supply
- Bore hole on site

STATUS OF THE PROJECT:

Completed and occupied

PRICE

SPACE AVAILABLE	PLINTH AREA	PRICE	INDICATIVE RENT
On Tower 2	4530 sqft	Ksh 54,000,000.00	Ksh 100 per sqft

COMMERCIAL BUILDING IN NYERI (P029)



LOCATION:

Nyeri Town

DESCRIPTION:

4 Storey commercial building (Ground plus four floors) complete with basement parking

AMENITIES:

- Connection to main water & electricity
- Kitchenette and washrooms for all floors
- Overhead and basement water storage
- High speed lifts

STATUS OF THE PROJECT:

Ready for occupation

PRICE

Ksh 150,000,000.00

OFFICE SPACE ON MOMBASA ROAD (P034)

**LOCATION:**

Mombasa Road

DESCRIPTION:

4 units office space for sale

AMENITIES:

- Washrooms
- Ample parking
- Lifts
- CCTV Cameras
- Chute facilities
- Standby generator

STATUS OF THE PROJECT:

Ready for occupation

PRICE

Ksh 11,000,000 each

Indicative Monthly Rent - Ksh 81,500 per month

OFFICE BLOCK ON RIVERSIDE DRIVE (P041)

**LOCATION:**

Riverside Drive

DESCRIPTION:

Office and related facilities, car parking spaces and other common areas in a serene and secure environment, which is easily accessible and next to the road, Riverside Drive.

Boundaries to the property are marked off by stone masonry wall topped up with an electric fence.

AMENITIES:

- Ample water supply & borehole connection
- Open work spaces & meeting rooms
- Paved driveway & parking
- Visitors lounge, washrooms
- Access control & CCTV
- Lactation room
- Connection to electricity mains
- Kitchen parlour & breakout area
- Power backup generator
- Storage rooms
- Lift to all floors

STATUS OF THE PROJECT:

Ready for occupation

PRICE

Ksh 500,000,000



Land & plots



Residential Plots in Kikambala (PL003)

Location:

Kikambala

Description:

Eighth of an acre (50 X 100) residential plots

Amenities

- Perimeter walling round the entire project
- Electricity available for connection
- Internal roads to murram level
- Bore hole and piped water to every plot
- Sewer system (to link to a proposed treatment plant)
- Storm water drainage.

Price: Ksh 2,200,000.00

Residential Plots in Thika (PL004)

Location:

Off Thika-Gatanga Road.

Description:

Quarter acre (100 X 100) residential plots

Amenities

- Controlled development in a gated community
- Red soil
- Tarmacked and murram graded roads
- Perimeter wall
- Distinct predetermined house designs

Price: Ksh 5,500,000.00 Negotiable

Residential Plots in Thika (PL005)

Location:

Along Gatanga Road

Description:

Blocks of land ranging from 5 acre blocks up to 115-acre blocks

Amenities

- Murram graded internal roads
- Close proximity to Thika-Gatanga Road
- Well drained red soils

Price: Ksh 14,500,000.00 per acre (negotiable)

Mixed use land in Ngoliba, Thika (PL010)

Location:

Ngoliba area off Thika near Kenchic area.

Access from the Thika – Garissa Highway is via the Makuyu – Ithanga – Gati-iguru Road (recently tarmacked) approximately 8Km in.

Description:

Eighth of an acre, quarter acre, half acre, one acre and commercial plots.

Amenities

- Tarmac access from main road
- Murram level driveways
- Proximity to KPLC connection point

TYPE	Price
Eighth of an acre	Ksh 800,000.00
Quarter of an acre	Ksh 1,025,000.00
Half an acre	Ksh 1,600,000.00
One acre	Ksh 2,900,000.00
Commercial Plots (40 X 80)	Ksh 1,100,000.00

Land in Kiserian (PL012)

Location:

In Olchoro Onyore, next to Oloonton Anglican Church.

Access from Kiserian Township is 4km via the Kiserian – Isinya Road and 10 Km into Onyore via a murram road.

Description:

Eight acres of agricultural land on Free hold title.

Amenities

- Nearby electricity mains for connection
- Water available from private boreholes
- Immediate access to murram standard roads

Price: Ksh 9,600,000.00

Land in Kajiado (PL014)

Location:

Kajiado Town near UMMA University approximately 1.5Km off Namanga Road in Dalalekutuk Area

Description:

200 acres accessible via an all-weather road and on free hold title

Price: Ksh 3,660,000 per acre

Land in Kajiado (PL015)

Location:
Kajiado Town near Naisula School approximately 1.7Km off Namanga Road in Dalalekutuk Area.

Description:
120 acres accessible via an all-weather road and on free hold title

Price: Ksh 3,900,000 per acre

Land in Isinya – Kisaju area (PL016)

Location:
Isinya approximately 7 Km from Isinya Township and 800 M off the Isinya – Kiserian Road

Description:
192 acres accessible via an all-weather road and on free hold title

Price: Ksh 3,900,000 per acre

Land in Kamiti area (PL017)

Location:
Kamiti in Kiambu County on Kamiti Forest Road off Ruiru Road and adjacent to Tatu City, fronting Mukuyu River.

Description:
200 acres accessible via an all-weather road and on free hold title

Price: Ksh 25,000,000 per acre

Residential Plots in Thika (PL021)

Location:
Off Thika - Gatanga Road

Description:
Eighth of an acre (50 X 100) residential plots, set in a secured, controlled and gated community.

- Amenities**
- Murram graded internal roads
 - Masonry and chain link perimeter
 - Commercial zone fronting the road
 - Predetermined house designs
 - Street lighting
 - Children's play area
 - Jogging track and foot paths
 - Red soils

Price:
Ksh 2,700,000.00 for eighth of an acre plot
Ksh 5,100,000.00 for quarter of an acre plot

Residential Plots in Merisho, Matasia (PL022)

Location:
Merisho Area, approximately 3km from Matasia Trading Centre

Description:
Quarter of an acre (100 X 100) residential plots.

- Amenities**
- Immediate access to murram standard roads
 - Close proximity to schools, hospitals and other social amenities.
 - Water from nearby connection points
 - Nearby electricity mains for connection

Price: Ksh 4,500,000.00 (negotiable)

Residential Plots in Kitengela (PL026)

Location:
Kitengela 2 Km off Namanga Road and adjacent to Kampala International University

Description:
1/8 Acre plots for sale

- Amenities**
- Fence and gate
 - Controlled development
 - Easy access
 - Ready titles

Price: Ksh 1,000,000 for 1/8 of an acre

Land along Limuru Road (PL027)

Location:
Along Limuru Road at Redhill.

Description:
Block of 17.16 Acres of land.

- Amenities**
- Proximity to shopping malls
 - Ideal for commercial and residential developments
 - Well drained red soil
 - Access to electricity and water

Price: Ksh. 520,000,000.00 (Negotiable)

Golf resort in Makuyu,Muranga county (PL028)

Location:

Makuyu in Muranga county

Description:

A golf estate Comprising of plots ideal for residential, retirement and holiday homes, the project will be fully serviced.

Amenities

- Water and electricity
- A modern paved road network
- A comprehensive sewage system
- Internet connectivity
- CCTV and other internal security measures, including a fire station and a police post

Price: Ksh 4.5M for a quarter of an acre

Land for sale (PL029)

Location:

Muthaiga North approximately 1.5 kms off Kiambu Road turning off and to the right from Nairobi at Rock City Garden & borders Balozi Estate to the west

Description:

9 acre piece of land

Amenities

- Touching tarmac
- Borehole on site
- Connection to electricity mains
- Perimeter wall fencing
- Indigenous trees on site

Status off the project:

Ready for development or subdivision and sale as plots

Price: Ksh 750,000,000

Land in Karen (PL0030)

LOCATION:

Karen,10 Korongo Road

DESCRIPTION:

1/2 acre parcel of land in Karen

PRICE
Ksh 35,000,000

Land for sale (PL0031)

Location:

Nanyuki Town (CBD)

Description:

1/8th Acre commercial plot

Amenities

- Connection to power mains
- Access to banks, malls and social amenities
- Ideal for construction of commercial buildings or shopping complex

Price: Ksh 40,000,000

Prime Land in Spring valley (PL043)

LOCATION:

Adjacent to Spring Valley roundabout off Kabete road

DESCRIPTION:

This is a prime 0.5-acre piece of Land in Spring valley.

Amenities

- Connection to electricity, water and sewer mains
- Possible access via 2 other roads – Shanzu Link and Shanzu Road
- Masonry perimeter walling round the entire property
- Fairly flat with a regular shape
- Red loamy soils and mature trees
- Strategically located near social amenities

Price:
Accepting offers

Prime Land for sale in Kikuyu (PL048)

LOCATION:

Kikuyu Area, Kiambu County

DESCRIPTION:

Available from 1 acre.

Amenities

- Close proximity to the Southern Bypass
- 3 km from Kikuyu Town
- Ideal for both residential and commercial use
- Connection to electricity and water mains
- Gently sloping, hence ideal for development
- Red soil

Price:
From Ksh 48,000,000.00

Land in Kajiado (PL049)

Location:

Located in Kajiado County, 1.4km from Mailua Trading Centre, next to Sere Primary School.

Description:

20 acre piece of land

Ideal for farming

The title is Freehold

Price: Ksh 250,000 per acre, selling as a block of 20 acres

Land in Isinya (PL050)

Location:

Located along Natendereti area, Kipeto Sublocation, Isinya. 2.5Km from Isinya Shopping centre

Description:

1 acre piece of land

Ideal for immediate development or farming

Title is freehold

Price: Ksh 4,500,000M



Visit our physical property hub today at KUSCCO Centre – Ground Floor – Kilimanjaro Avenue, Upper Hill or visit our virtual hub www.goodhome.co.ke to view our available properties. Alternatively, you can call us on **0711049739** or **0711049696**

DISCLAIMER:

The Co-operative Bank of Kenya Limited, its directors, partners, employees and related entities responsible for preparing this property listing believe that the information carried therein is correct. However, no representation or warranties of any nature whatsoever are given, intended or implied, and as such, you should rely on your own enquiries to the accuracy of the information or material available from this listing.

Please note that information provided on this listing is general information and is subject to change without notice and should not be relied upon as a substitute for legal, financial, real estate or other expert advice. The Co-opBank of Kenya Limited disclaims all liability and responsibility including negligence for any direct and or indirect loss or damage suffered by any person or company arising out of any use of the listing or any information or material available from it.



Thank You



CO-OPERATIVE BANK
We are you