



CO-OPERATIVE BANK

We are you



GOODHOME MORTGAGE PROPERTY LISTING

February 2022



RESIDENTIAL PROPERTIES

APARTMENTS AT SABAKI (P002)



LOCATION:

Sabaki, approximately 4.5Km off Mombasa Road from the Total Junction

DESCRIPTION:

Bedsitters, studio, 1 & 2 bedroom apartments

AMENITIES:

- Private club house
- Basketball court
- Access control system
- Nursery school
- Children's play area
- Swimming pool
- Bus park
- Shopping centre

STATUS OF THE PROJECT:

Nearing Completion

PRICE

TYPE	PLINTH AREA	PRICE	INDICATIVE RENT
Bedsitters	16 sqm	Ksh 1,155,000.00	Ksh 7,000.00
Studios	20 sqm	Ksh 1,760,000.00	Ksh 8,000.00
1 Bedroom	30 sqm	Ksh 2,530,000.00	Ksh 9,500.00
2 Bedroom	40 sqm	Ksh 3,190,000.00	Ksh 11,500.00
2 Bedroom (en-suite)	45 sqm	Ksh 3,630,000.00	Ksh 12,500.00

APARTMENTS IN SYOKIMAU (P003)



LOCATION:

Syokimau, approximately 800 metres off Mombasa Road before the Mlolongo Weighbridge

DESCRIPTION:

1, 2 and 3 bedroom apartments

AMENITIES:

- Master ensuite
- Open plan kitchen
- Laundry area
- Alarm system
- Perimeter wall
- Ample parking
- Children's play area
- Controlled access

STATUS OF THE PROJECT:

Ready for occupation

PRICE

TYPE	PLINTH AREA	PRICE	INDICATIVE RENT
2 Bedroom	74 sqm	Ksh 6,950,000.00	Ksh 28,000.00
3 Bedroom	96 sqm	Ksh 8,800,000.00	Ksh 35,000.00

APARTMENTS IN RACECOURSE AREA (P004)



LOCATION:

Racecourse Area, approximately 400 metres off Ngong Road

DESCRIPTION:

Studios, 1 and 2 bedroom apartments

AMENITIES:

- Rooftop garden
- Swimming pool
- Play area
- Commercial area
- Large central garden
- Ample parking
- Nursery school
- Borehole

STATUS OF THE PROJECT:

Ready for occupation

PRICE

TYPE	PLINTH AREA	PRICE	INDICATIVE RENT
Studios	25 sqm	Ksh 3,500,000.00	Ksh 25,000.00
Standard 1 Bedroom	37 sqm	Ksh 4,800,000.00	Ksh 35,000.00
Deluxe 1 Bedroom	40 sqm	Ksh 5,000,000.00	Ksh 38,000.00
2 Bedroom	72 sqm	Ksh 8,000,000.00	Ksh 45,000.00

APARTMENTS IN RUAKA (P005)



LOCATION:

Ruaka, approximately 200 metres from the bypass & opposite Joyland Supermarket

DESCRIPTION:

2 & 3 Bedroom apartments all ensuite

AMENITIES:

- Cabro-paved parking
- Fitted kitchen
- Perimeter wall
- Adequate water storage
- Spacious lounge

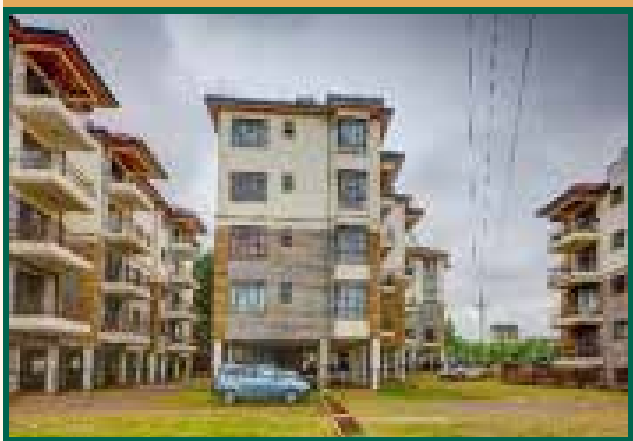
STATUS OF THE PROJECT:

Ready for occupation.

PRICE

TYPE	PLINTH AREA	PRICE	INDICATIVE RENT
2 Bedroom	92 sqm	Ksh 9,000,000	Ksh 45,000.00
3 Bedroom Duplex	186 sqm	Ksh 13,000,000	Ksh 60,000.00

APARTMENTS IN RUAKA (P006)



LOCATION:

Ruaka, approximately 200 metres off Limuru Road

DESCRIPTION:

2 and 3 bedroom apartments (Master en-suite)

AMENITIES:

- Cabro-paved driveways
- Ample parking
- Swimming pool
- CCTV
- Spacious balconies
- Green areas
- Electric fence
- Gym

STATUS OF THE PROJECT:

Ready for occupation

PRICE

TYPE	PLINTH AREA	PRICE	INDICATIVE RENT
2 Bedroom	82 sqm	Ksh10,000,000.00	Ksh 46,000.00
3 Bedroom	104 sqm	Ksh11,000,000.00	Ksh 56,000.00

APARTMENTS IN MOWLEM AREA (P010)



LOCATION:

Along Kangundo Road

DESCRIPTION:

1, 2 and 3 bedroom apartments

AMENITIES:

- Ample parking
- Commercial centre
- Perimeter wall
- Day care
- Sentry unit (Guard station)
- Gym
- Swimming pool
- DSTV

STATUS OF THE PROJECT:

Ready for occupation

PRICE

TYPE	OLD PRICE	PROMOTIONAL PRICE
1 Bedroom	Ksh 4,500,000.00	Ksh 3,800,000.00
2 Bedroom	Ksh 6,000,000.00	Ksh 5,000,000.00
3 Bedroom	Ksh 7,500,000.00	Ksh 6,000,000.00

APARTMENTS IN PARKLANDS (P012)



LOCATION:

Parklands, near The National Museums of Kenya

DESCRIPTION:

Luxurious apartments in Parklands

AMENITIES:

- Spacious lounge
- Good location
- Ample parking
- American kitchen
- High speed lifts
- Spacious dining area
- Pantry

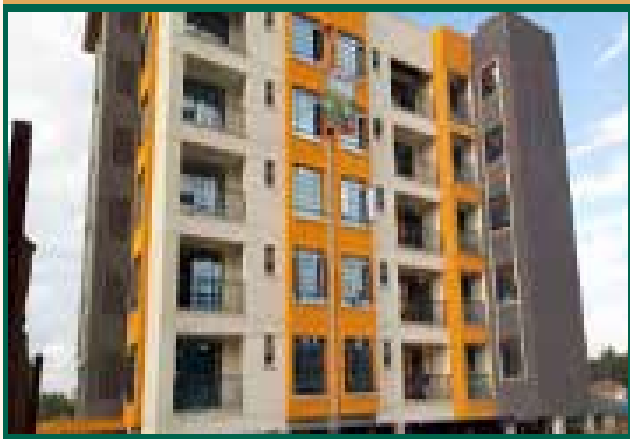
STATUS OF THE PROJECT:

Under construction

PRICE

TYPE	PLINTH AREA	PRICE
2 bedroom	95 sqm	Ksh 12,500,000.00

APARTMENTS IN NGONG TOWN (P019)



LOCATION:

Ngong Town, near the Co-operative Bank Branch

DESCRIPTION:

2 and 3 bedroom apartments (30 units total)

AMENITIES:

- Lounge cum dining room
- Kitchen with pantry
- Master ensuite
- Boundary wall
- Adequate water storage
- 1 parking slot per apartment

STATUS OF THE PROJECT:

Ready for Occupation

PRICE

TYPE	PLINTH AREA	PRICE
2 Bedroom	86 sqm	Ksh 5,500,000.00
3 Bedroom	103 sqm	Ksh 6,500,000.00

APARTMENTS AT VIPINGO (P020)



LOCATION:

Vipingo town

DESCRIPTION:

1, 2 & 3 bedroom apartments (330 units)

AMENITIES:

- Paved roads
- Security patrols
- Playgrounds
- Ample parking
- Swimming pool
- Perimeter fence
- Kindergarten
- Reliable power connection
- CCTV surveillance

STATUS OF THE PROJECT:

Ready for occupation

PRICE

TYPE	PLINTH AREA	PRICE
3 Bedroom	75 sqm	Ksh 4,600,000.00

STAND ALONE HOUSES AT VIPINGO (P021)



LOCATION:
Vipingo Town

DESCRIPTION:
Two bedroom bungalows (90 units) and three bedroom maisonettes (62 units); all ensuite

AMENITIES:

- Parking for 2 cars
- Laundry area
- Adequate water storage
- Terraces
- Boundary wall

STATUS OF THE PROJECT:
Under construction

PRICE

TYPE	PLINTH AREA	PRICE
2 Bedroom Bungalows	155 sqm	Ksh 13,000,000.00
3 Bedroom Maisonette	210 sqm	Ksh 17,000,000.00

APARTMENTS AT SABAKI (P023)



LOCATION:
Sabaki area next to Signature mall along Mombasa Road.

DESCRIPTION:
Studio apartments ideal for homestay investment with attractive daily income.

AMENITIES:

- Cabro paved walkways
- Perimeter walling
- Play area
- Laundry area
- Green areas and gardens
- Controlled access
- Rooftop
- Ample parking

STATUS OF THE PROJECT:
Ready for occupation

PRICE

TYPE	PLINTH AREA	PROMOTIONAL PRICE	ACTUAL PRICE
Standard Studio	21 sqm	Ksh 1,995,000.00	Ksh 2,600,000.00
Deluxe Studio	28 sqm	Ksh 2,755,000.00	Ksh 3,400,000.00

ONE APARTMENT UNIT IN NYALI (P025)



LOCATION:
Nyali, approximately 600M off Links Road

DESCRIPTION:
3 bedroom apartment on first floor

AMENITIES:

- Master en-suite
- Borehole on site
- Laundry area
- Detached servants quarter
- Lounge Area
- Controlled access
- Ample parking
- Activated rooftop (Terrace)

STATUS OF THE PROJECT:
Ready for occupation

PRICE
Ksh 13,000,000.00

MAISONETTE IN SOUTH C (P027)



LOCATION:

South C

DESCRIPTION:

4 bedroom maisonette, complete with servants' quarters

AMENITIES:

- Master ensuite
- Perimeter wall
- Backyard and front yard
- Electric fence
- Separate dining area
- Ample water storage

STATUS OF THE PROJECT:

Ready for occupation

PRICE

Ksh 20,000,000.00

MANSION IN HARDY, KAREN (P030)



LOCATION:

Hardy Area, Karen

DESCRIPTION:

This is a double storey, 4 bedroom, all en-suite town house measuring 520 sqm, developed on half an acre

AMENITIES:

- En-suite domestic servants' quarters
- Landscaped gardens
- Store block
- Gazebo
- Connection to electricity and water mains
- Gate house

STATUS OF THE PROJECT:

Ready for occupation

PRICE

Accepting Offers

SERVICED APARTMENT BLOCK IN LAVINGTON (P031)



LOCATION:

Lavington, Nairobi.

DESCRIPTION:

Fully furnished & serviced apartments comprising of 1- & 2-bedroom apartments developed on 0.755 of an acre

AMENITIES:

- Fully furnished apartments
- Manicured gardens
- Paved walk ways
- Gym and spa
- Back-up generator
- Electric fence
- Fully equipped kitchen and restaurant
- Rooftop swimming pool
- Ample basement parking
- Lift to all floors
- Perimeter wall
- Controlled access

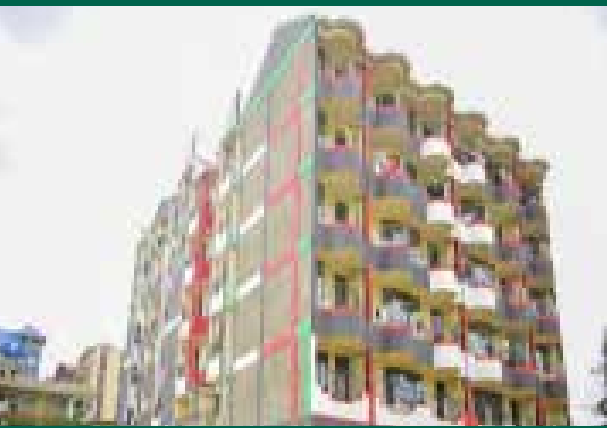
STATUS OF THE PROJECT:

Ready for occupation

PRICE

Ksh 675,000,000.00 (negotiable)

APARTMENT BLOCK AT KAHAWA WENDANI (P032)



LOCATION:
Kahawa Wendani, 1.2 km from Thika SuperHighway

DESCRIPTION:
A block of apartments comprised of Studios, 1 Bedrooms and 2 Bedrooms

AMENITIES:

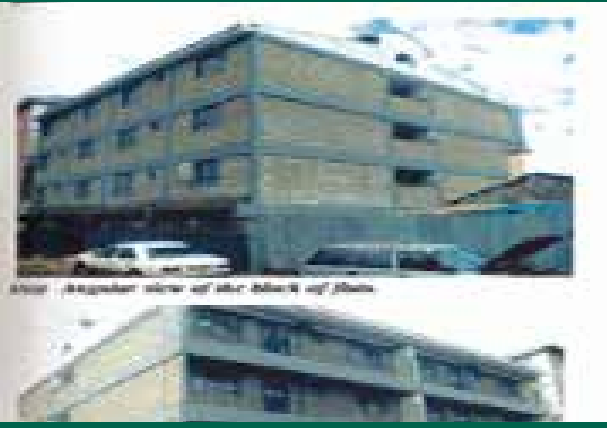
- Constant water supply
- Access to public transport
- Fitted kitchen

STATUS OF THE PROJECT:
Ready for occupation and has tenants

ASKING PRICE: Ksh 130,000,000

TYPE	UNITS	INDICATIVE RENT
Studios	81	Ksh 10,000.00
1 Bedroom	6	Ksh 15,000.00
2 Bedroom	16	Ksh 20,000.00

BLOCK OF APARTMENTS AT INDIES, ELDORET (P033)



LOCATION:
Eldoret, 200 meters off Eldoret - Malaba highway

DESCRIPTION:
Four story building comprised of 1 bedroom (1 unit) and 2 bedroom (15 units) flats.

AMENITIES:

- Master ensuite
- Kitchen cabinets
- Murram access road
- Newly constructed
- Ready tenants
- Close proximity to Eldoret town

STATUS OF THE PROJECT:
Ready for occupation and has tenants.

PRICE
Ksh 50,000,000
Expected monthly rental income - Ksh 132,000.00

APARTMENTS IN RUNDA (P036)



LOCATION:

Within the mixed use development of Two Rivers Mall

DESCRIPTION:

It is comprised of 1br,2br,3br,3br + Dsq Apartments & 3 Br Duplex Villas

AMENITIES:

- Rooftop garden
- Mini-parks
- Swimming pool
- Children's playground
- 7 - aside football pitch
- Recreational centre
- Gym

STATUS OF THE PROJECT:

Under construction

PRICE

TYPE	PLINTH AREA	PRICE
Prices for apartments		
1 Bedroom	57 sqm	Ksh 8,500,000.00
2 Bedroom	90 sqm	Ksh 12,300,000.00
3 Bedroom	102 sqm	Ksh 14,400,000.00
3 Bedroom + DSQ	117 sqm	Ksh 16,500,000.00
Prices for Duplex Villa Units		
3 Bedroom + DSQ Type A Not Cascading	124 sqm	Ksh 18,190,000.00
3 Bedroom + DSQ Type B Cascading	140 sqm	Ksh 21,400,000.00
3 Bedroom + DSQ Type C Not Cascading	150 sqm	Ksh 23,000,000.00
3 Bedroom + DSQ Type D Cascading	158 sqm	Ksh 24,500,000.00

APARTMENTS IN RUNDA (P037)



LOCATION:

Within the mixed use development of Two Rivers Mall

DESCRIPTION:

1,2 and 3 Bedroom apartments for sale

AMENITIES:

- Internet provision
- DSTV connection
- Business centre with virtual offices
- Standby generator
- CCTV cameras
- Jacuzzi
- Soccer pitch
- Swimming pool
- Tennis court
- Yoga studio
- High speed lifts
- Video door phone

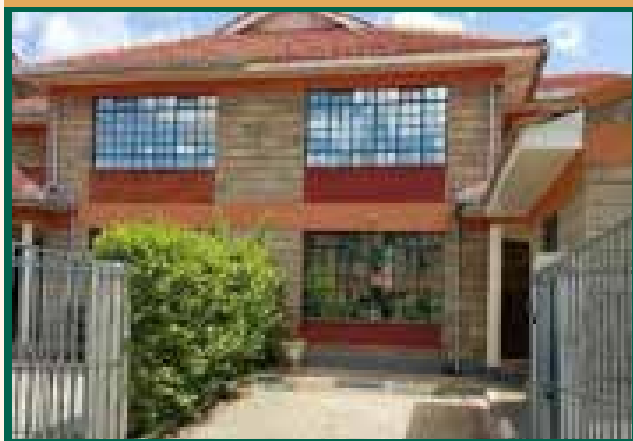
STATUS OF THE PROJECT:

Under construction

PRICE

TYPE	INDICATIVE PRICE
1 Bedroom	Ksh 16,000,000.00
2 Bedroom	Ksh 23,000,000.00
3 Bedroom	Ksh 30,000,000.00

MAISONETTE ON MOMBASA ROAD (P039)



LOCATION:
Along Mombasa Road

DESCRIPTION:
4-bedroom master ensuite maisonette with a DSQ

AMENITIES:

- Separate dining area
- Kitchen with pantry
- Laundry area
- 3 bathrooms
- Parking for 2 cars
- Children's play area
- Adequate water storage
- 24/7 security manned entrance gate
- Cloakroom

STATUS OF THE PROJECT:
Ready for occupation

PRICE

TYPE	PLINTH AREA	PRICE	INDICATIVE RENT
4 Bedroom	160 sqm	Ksh 16,000,000	Ksh 50,000.00

APARTMENT IN KILIMANI (P042)



LOCATION:
Kilimani along Kayahwe Road

DESCRIPTION:
3 Bedroom master ensuite apartment

AMENITIES:

- Guest cloakroom
- Kitchen with pantry
- Borehole
- Ample parking slots
- Lounge cum dining area
- Laundry area
- Estate boundary
- Ample water storage with electric fence

STATUS OF THE PROJECT:
Ready for occupation

PRICE
Ksh 13,500,000.00
Indicative Rent – Ksh 75,000.00

TOWN HOUSE IN SYOKIMAU (P044)



LOCATION:
Along Mombasa Road – At Syokimau

DESCRIPTION:
4 Bedroom semi-detached townhouse with SQ (Master en-suite)

AMENITIES:

- En-suite guest bedroom
- Extra storage space
- Borehole
- Guest cloakroom
- 2 private parking slots
- Backyard
- Individual title deed
- Laundry area
- Estate boundary with electric fence

STATUS OF THE PROJECT:
Ready for occupation

PRICE
Ksh 11,500,000.00

MAISONETTE IN LOWER KAREN PLAINS (P046)



LOCATION:

Lower Karen Plains

DESCRIPTION:

5-bedroom Maisonette, sitting on ½ an acre

AMENITIES:

- 4 bathrooms
- DSQ
- Spacious lounge
- Ample water storage
- Manicured gardens
- Controlled access
- Ample parking

STATUS OF THE PROJECT:

Ready for occupation

PRICE

Ksh 58,000,000.00

HOTEL APARTMENTS IN MTWAPA, KILIFI COUNTY (P048)



LOCATION:

Mtwapa next to club Tropicana about 100 meters off Malindi Mombasa Road with an exit directly opposite National Bank of Kenya premises

DESCRIPTION:

Hotel complex ready for daily bookings

AMENITIES:

- Master en-suite
- Lounge area
- Laundry area
- Borehole on site
- Spacious rooms
- Detached servants quarter
- Controlled access
- Ample parking
- Activated rooftop (Terrace)

STATUS OF THE PROJECT:

Ready for Rentals

PRICE

Ksh 68,000,000.00

BUNGALOW IN MLOLONGO (P049)



LOCATION:

Along Mombasa Road – At Mlolongo, off Katani Road

DESCRIPTION:

3 Bedroom Bungalow (Master en-suite)

AMENITIES:

- 2 private parking slots
- Estate boundary with electric fence
- Laundry area
- Individual title deed
- Kitchen fitted with Kitchen cabinets
- Borehole

STATUS OF THE PROJECT:

Ready for occupation

PRICE

Ksh 9,000,000.00

A BLOCK OF APARTMENTS IN NYANCHWA AREA KISII (P050)



LOCATION:
Kisii county, Nyanchwa

DESCRIPTION:
5 story block of flats comprising of 1 unit of shop, 5 units of 1 bedroom flats & 9 units of 2 bedroom flats on 0.0711 of an acre

AMENITIES:

- Mains for electricity & water connected to the property
- Drainage is to septic tank/sewer line
- Area is covered by cellular mobile networks
- Floors are finished in ceramic tiles
- Stone perimeter wall
- Ready tenants
- Close proximity to Kisii town
- Burglar proof windows

STATUS OF THE PROJECT:
Ready for occupation

PRICE	INDICATIVE RENT
Ksh 24,000,000.00	Ksh 177,000.00

APARTMENTS IN KILELESHWA (P051)



LOCATION:
Kileleshwa, off Othaya Road

DESCRIPTION:
Elegant studios, one & two bedroom luxury apartments. Each apartment boasts of ultra-comfortable and spacious interior that make for a homely interior

AMENITIES:

- Solar water heaters
- Backup generator
- High speed lifts
- Rooftop lounge deck
- Video Intercom
- Fitted kitchen with oven, extractor & microwave
- Equipped gym
- Borehole
- Electric fence

STATUS OF THE PROJECT:
Construction ongoing

TYPE	PRICE FROM
Studios	Ksh 7,661,000.00
1 Bedroom	Ksh 9,139,000.00
2 Bedroom	Ksh 16,783,000.00

GATED COMMUNITY IN KISAJU (P052)



LOCATION:
Kisaju, off Namanga Road

DESCRIPTION:
A modern estate sitting on 32 Acres comprising of 1,2 & 3 Bedroom apartments and Townhouses with & without DSQ to complement your contemporary lifestyle in a tranquil environment away from the flurry of the city

AMENITIES:

- Ample parking
- Children Play ground
- Electric Fence
- Cabro paved Drive ways
- Jogging Track
- Retail and commercial center
- Two Boreholes
- Solar water heater

UNIT	PRICE
1 Bedroom	Ksh 1,906,000.00
2 Bedroom	Ksh 3,200,000.00
3 Bedroom	Ksh 3,800,000.00

DESCRIPTION	PRICE (KSH)
3 Bedroom without DSQ	Ksh 5,800,000.00
3 Bedroom with DSQ	Ksh 6,200,000.00

APARTMENTS IN KITISURU (P053)



LOCATION:
Kitsuru, off Lower Kabete

DESCRIPTION:
3 Bedroom Apartments

AMENITIES:

- Ample parking
- Borehole
- Cabro paved compound
- Perimeter wall with electric fence
- Master En-suite
- Lifts

STATUS OF THE PROJECT:
Ready for occupation

PRICE

TYPE	PLINTH AREA	PRICE FROM
3 bedrooms + DSQ	123 Sqm	Ksh 10,900,000.00
3 bedroom	112 Sqm	Ksh 9,500,000.00

APARTMENTS IN RUAKA (P054)



LOCATION:
Ruaka, opposite Joyland Supermarket

DESCRIPTION:
2 and 3 Bedroom apartments

AMENITIES:

- Borehole
- Solar water heating system
- Roof garden
- Electric fence along the perimeter
- CCTV and backup generator for security
- Clothes drying yard on roof
- Ample parking
- Lift
- Children's play area

STATUS OF THE PROJECT:
Ready for occupation

TYPE	PRICE	INDICATIVE RENT
2 bedrooms	Ksh 7,500,000.00	Ksh 35,000.00
3 bedroom	Ksh 8,900,000.00	Ksh 40,000.00

MAISONETTE IN SYOKIMAU (P055)



LOCATION:
Syokimau, 900m from the tarmac from Mombasa Road

DESCRIPTION:
The house has been converted into single rooms, bedsitters, and a one bedroom that are ideal for rental.

STATUS OF THE PROJECT:
Ready for occupation

PRICE

Ksh 30,000,000.00

MAISONETTE ALONG KIAMBU ROAD (P056)



LOCATION:

Located along Kiambu Road, Edenville Estate;

DESCRIPTION:

3 bedroom maisonette master ensuit with Dsq

AMENITIES:

- Gated community
- Covered Garden Terrace
- Cabro paved walkways
- 24hr security
- Parking for 2 cars and visitors parking

PRICE

TYPE	PLINTH AREA	PRICE FROM
3 bedrooms + DSQ	159 sqm	Ksh 20,000,000.00

APARTMENTS IN MOUNTAIN VIEW (P059)



LOCATION:

Along Waiyaki Way, opposite Mountain view Total Petrol Station in Mountain View area

DESCRIPTION:

1,2 & 3 all en-suite apartments on 0.1025 acres

AMENITIES:

- Ample Parking
- Gym
- Shower Cubicles
- DSTV
- Rooftop Swimming pool
- Laundry Area
- Rooftop Sitting Area
- Sentry Unit (Guard Station)
- Perimeter wall

STATUS OF THE PROJECT:

Under construction

PRICE

TYPE	PLINTH AREA	PRICE
1 Bedroom	50 sqm	Ksh 6,500,000.00
2 Bedroom	113 sqm	Ksh 10,000,000.00
3 Bedroom	140 sqm	Ksh 13,000,000.00
3 Bedroom + DSQ	150 sqm	Ksh 14,000,000.00



COMMERCIAL PROPERTIES

OFFICE SPACE IN UPPER HILL (P007)



LOCATION:

Upper Hill Area

DESCRIPTION:

An Ultra-modern, state of the art, 18 storey office block set on 1 acre

AMENITIES:

- Conference facilities
- Banking Hall
- Access control
- Generator
- High speed Lifts
- CCTV Backed security
- ICT Structured Cabling
- 164 Parking Bays
- Access control

STATUS OF THE PROJECT:

Ready for Occupation

PRICE

Ksh 145,000.00 per sqm and Ksh 1,000,000.00 per Parking slot

OFFICE SPACE IN WESTLANDS (P022)



LOCATION:

Westlands, off Waiyaki Way

DESCRIPTION:

3 office suites measuring a total of 420 sqm in a well-maintained office block in Westlands.

AMENITIES:

- 6 High speed lifts
- 24 hour security
- Boundary Wall
- Electric fence
- Full back-up generator
- 6 Parking slots including visitors' parking
- Bore hole on site
- Reliable water supply

STATUS OF THE PROJECT:

Completed and occupied

PRICE

SPACE AVAILABLE	PLINTH AREA	PRICE	INDICATIVE RENT
Three office suites on Tower 2	1510 sqft	Ksh 18,000,000.00	Ksh 100.00 per sqft

COMMERCIAL BUILDING IN NYERI (P029)



LOCATION:

Nyeri Town in the CBD.

DESCRIPTION:

4 Storey commercial building (Ground plus four floors) complete with basement parking

AMENITIES:

- Connection to main water & electricity
- Overhead and basement water storage
- Kitchenette and washrooms for all floors
- High speed lifts

STATUS OF THE PROJECT:

Ready for occupation

PRICE

Ksh 150,000,000.00

OFFICE SPACE ON MOMBASA ROAD (P034)



LOCATION:

Mombasa Road next to Nextgen Mall

DESCRIPTION:

4 units office space for sale

AMENITIES:

- Washrooms
- Ample parking
- Lifts
- CCTV Cameras
- Chute facilities
- Standby generator

STATUS OF THE PROJECT:

Ready for occupation

PRICE

Ksh 11,000,000.00 each

Indicative Monthly Rent - Ksh 81,500.00 per month

OFFICE BLOCK ON RIVERSIDE DRIVE (P041)



LOCATION:

Riverside Drive

DESCRIPTION:

Office and related facilities, car parking spaces and other common areas in a serene and secure environment, which is easily accessible and next to the road, Riverside Drive.

Boundaries to the property are marked off by stone masonry wall topped up with an electric fence.

AMENITIES:

- Ample water supply & borehole connection
- Open work spaces & meeting rooms
- Paved driveway & parking
- Visitors lounge, washrooms
- Access control & CCTV
- Lactation room
- Connection to electricity mains
- Kitchen parlour & breakout area
- Power backup generator
- Storage rooms
- Lift to all floors

STATUS OF THE PROJECT:

Ready for occupation

PRICE:

Accepting Offers

COMMERCIAL COMPLEX ON MOMBASA ROAD (P057)



LOCATION:

Along Mombasa Road behind DTB plaza in Nairobi City County.

DESCRIPTION:

1.4 acre plot developed with two sets of godowns which is a popular location with convenient access to all social and economic amenities and within short distance from Nairobi City centre.

AMENITIES:

- Availability to anchor Tenants
- CCTV Backed security
- Backup Generator
- ICT Structured Cabling
- Ample Parking
- Reliable water, sewer and electricity
- Security Access control

STATUS OF THE PROJECT:

Ready for occupation

PRICE:

Accepting Offers



LAND & PLOTS

RESIDENTIAL PLOTS IN KIKAMBALA (PL003)

LOCATION:
Kikambala

DESCRIPTION:
Eighth of an acre (50 X 100) residential plots

- AMENITIES:**
- Perimeter wall round the entire project
 - Electricity available for connection
 - Internal roads to murram level
 - Bore hole and piped water to every plot
 - Sewer system (to link to a proposed treatment plant)
 - Storm water drainage.

Price:
Ksh 2,200,000.00

RESIDENTIAL PLOTS IN THIKA (PL004)

LOCATION:
Off Thika-Gatanga Road.

DESCRIPTION:
Quarter acre (100 X 100) residential plots

- AMENITIES:**
- Controlled development in a gated community
 - Red soil
 - Tarmacked and murram graded roads
 - Perimeter wall
 - Distinct predetermined house designs

Price:
Ksh 5,500,000.00 (Negotiable)

RESIDENTIAL PLOTS IN THIKA (PL005)

LOCATION:
Along Gatanga Road

DESCRIPTION:
Blocks of land ranging from 5 acre blocks up to 115-acre blocks

- AMENITIES:**
- Murram graded internal roads
 - Close proximity to Thika-Gatanga Road
 - Well drained red soils

Price:
Ksh 14,500,000.00 per acre (Negotiable)

MIXED USE LAND IN NGOLIBA, THIKA (PL010)

LOCATION:

Ngoliba area off Thika Road near Kenchic area
Access from the Thika – Garissa Highway is via the Makuyu – Ithanga – Gati-iguru Road (recently tarmacked) approximately 8Km in

DESCRIPTION:
Various residential and commercial plots.

- AMENITIES:**
- Tarmac access from main road
 - Murram level driveways
 - Proximity to KPLC connection point

TYPE	Price
Eighth of an acre	Ksh 800,000.00
Quarter of an acre	Ksh 1,025,000.00
Half an acre	Ksh 1,600,000.00
One acre	Ksh 2,900,000.00
Commercial Plots (40 X 80)	Ksh 1,100,000.00

LAND IN KISERIAN (PL012)

LOCATION:
In Olchoro Onyore, next to Oloonton Anglican Church
Access from Kiserian Township is 4km via the Kiserian – Isinya Road and 10 Km into Onyore via a murram road

DESCRIPTION:
Eight acres of agricultural land on Free hold title

- AMENITIES:**
- Nearby electricity mains for connection
 - Water available from private boreholes
 - Immediate access to murram standard roads

Price:
Ksh 9,600,000.00

LAND IN KAJIADO (PL014)

LOCATION:
Kajiado Town near UMMA University approximately 1.5Km off Namanga Road in Dalalekutuk Area

DESCRIPTION:
200 acres accessible via an all-weather road and on free hold title

Price:
Ksh 3,660,000.00 per acre

LAND IN KAJIADO (PL015)

LOCATION:

Kajiado Town near Naisula School approximately 1.7Km off Namanga Road in Dalalekutuk Area

DESCRIPTION:

120 acres accessible via an all-weather road and on free hold title

Price:

Ksh 3,900,000.00 per acre

LAND IN ISINYA – KISAJU AREA (PL016)

LOCATION:

Isinya approximately 7 Km from Isinya Township and 800 M off the Isinya – Kiserian Road

DESCRIPTION:

192 acres accessible via an all-weather road and on free hold title

Price:

Ksh 3,900,000.00 per acre

LAND IN KAMITI AREA (PL017)

LOCATION:

Kamiti in Kiambu County on Kamiti Forest Road off Ruiru Road and adjacent to Tatu City, fronting Mukuyu River

DESCRIPTION:

200 acres accessible via an all-weather road and on free hold title

Price:

Accepting Offers

RESIDENTIAL PLOTS IN THIKA (PL021)

LOCATION:

Off Thika - Gatanga Road

DESCRIPTION:

Eighth of an acre (50 X 100) residential plots, set in a secured, controlled and gated community

AMENITIES:

- Murram graded internal roads
- Masonry and chain link perimeter
- Commercial zone fronting the road
- Predetermined house designs
- Street lighting
- Children's play area
- Jogging track and foot paths
- Red soils

Price:

Ksh 2,700,000.00 for eighth of an acre plot
Ksh 5,100,000.00 for quarter of an acre plot

RESIDENTIAL PLOTS IN MERISHO, MATASIA (PL022)

LOCATION:

Merisho Area, approximately 3km from Matasia Trading Centre

DESCRIPTION:

Quarter of an acre (100 X 100) residential plots

AMENITIES:

- Immediate access to murram standard roads
- Close proximity to schools, hospitals and other social amenities.
- Water from nearby connection points
- Nearby electricity mains for connection

Price:

Ksh 4,500,000.00 (Negotiable)

RESIDENTIAL PLOTS IN KITENGELA (PL026)

LOCATION:

Kitengela 2 Km off Namanga Road and adjacent to Kampala International University

DESCRIPTION:

1/8 Acre plots for sale

AMENITIES:

- Fence and gate
- Controlled development
- Easy access
- Ready titles

Price:

Ksh 1,300,000.00 for 1/8 of an acre

LAND ALONG LIMURU ROAD (PL027)

LOCATION:

Along Limuru Road at Redhill after Kiambu Road

DESCRIPTION:

Block of 17.16 Acres of land

AMENITIES:

- Proximity to shopping malls
- Ideal for commercial and residential developments
- Well drained red soil
- Access to electricity and water

Price:

Accepting offers

GOLF RESORT IN MAKUYU, MURANGA COUNTY (PL028)

LOCATION:

Makuyu in Muranga county

DESCRIPTION:

A golf estate comprising of plots ideal for residential, retirement and holiday homes, the project will be fully serviced.

AMENITIES:

- Water and electricity
- A modern paved road network
- A comprehensive sewage system
- Internet connectivity
- CCTV and other internal security measures, including a fire station and a police post

Price:
Ksh 4,500,000.00 for a quarter of an acre

LAND FOR SALE IN MUTHAIGA (PL029)

LOCATION:

Muthaiga North approximately 1.5 kms off Kiambu Road; turning off and to the right from Nairobi at Rock City Garden & borders Balozi Estate to the west

DESCRIPTION:

9 acre piece of land

AMENITIES:

- Touching tarmac
- Borehole on site
- Connection to electricity mains
- Perimeter wall fencing
- Indigenous trees on site

STATUS OF THE PROJECT:

Ready for development or subdivision and sale as plots

Price:
Accepting Offers

COMMERCIAL PLOT IN NANYUKI (PL031)

LOCATION:

Nanyuki Town (CBD)

DESCRIPTION:

1/8th Acre commercial plot

AMENITIES

- Connection to power mains
- Access to banks, malls and social amenities
- Ideal for construction of commercial buildings or shopping complex

Price:
Accepting Offers

PRIME LAND IN SPRING VALLEY (PL043)

LOCATION:

Adjacent to Spring Valley roundabout off Kabete road

DESCRIPTION:

This is a prime 2.15 acres piece of Land in Spring valley.

AMENITIES:

- Connection to electricity, water and sewer mains
- Possible access via 2 other roads – Shanzu Link and Shanzu Road
- Masonry perimeter walling round the entire property
- Fairly flat with a regular shape
- Red loamy soils and mature trees
- Strategically located near social amenities

Price:
Accepting offers

PRIME LAND FOR SALE IN KIKUYU (PL048)

LOCATION:

Kikuyu Area, Kiambu County

DESCRIPTION:

Available from 1 acre.

AMENITIES:

- Close proximity to the Southern Bypass
- 3 km from Kikuyu Town
- Ideal for both residential and commercial use
- Connection to electricity and water mains
- Gently sloping, hence ideal for development
- Red soil

Price:
From Ksh 48,000,000.00 per acre

LAND IN KAJIADO (PL049)

LOCATION:

Located in Kajiado County, 1.4km from Mailua Trading Centre, next to Sere Primary School.

DESCRIPTION:

20 acre piece of land

Ideal for farming

The title is Freehold

Price:
Ksh 250,000.00 per acre, selling as a block of 20 acres

LAND IN ISINYA (PL050)

LOCATION:

Located along Natendereti area, Kipeto Sublocation, Isinya. 2.5Km from Isinya Shopping centre

DESCRIPTION:

1 acre piece of land

Ideal for immediate development or farming

Title is freehold

Price:
Ksh 4,500,000.00

PLOTS FOR SALE IN RUIRU (PL051)

LOCATION:
14 Kms (15 minutes drive) from Thika superhighway accessed through Ruiru town or Kimbo Junction

DESCRIPTION:
Residential plots in a gated community

- AMENITIES:**
- Perimeter fence
 - Borehole
 - Recreational Park & Children's playground
 - Electricity available
 - Upgrading of the main road to Bitumen standards

Price:
Ksh 1,950,000.00 for 1/8 of an acre

COMMERCIAL PLOT ON RHAPTA ROAD (PL057)

LOCATION:
Raphta Road

DESCRIPTION:
One acre of prime Land in Westlands that could be developed into an office block, residential apartments, a commercial center or a hotel.

- AMENITIES:**
- Connection to sewer system
 - Power supply
 - Water connection
 - Immediate access to Raphta Road
 - Perimeter wall

STATUS OF THE PROJECT:
Ready for immediate development

Price:
Ksh 270,000,000.00

LAND IN MOWLEM AREA (PL059)

LOCATION:
300m off Komarock road in Mowlem area Nairobi and next to Tononoka Rolling Mills.

DESCRIPTION:
24.85 Acres parcel of land that is rectangular shaped, fairly level and with mixed soil . Part of the land is enclosed with razor wire and electric fence while the rest is open.

- AMENITIES:**
- Perimeter wall
 - Electric Fence
 - Scrap metal yard
 - Workshop
 - Office Block
 - Control room

Price:
Ksh 1,200,000,000.00

LAND FOR SALE IN MAGANA AREA, THIKA (PL060)

LOCATION:
Magana area, Kiambu county 4.6 Km off Thika Garissa Highway

DESCRIPTION:
3-acre agricultural land within a residential neighborhood.

STATUS OF THE PROJECT:
Ready for development freehold titles

Asking Price:
Ksh 4,100,000.00



Visit our physical Property Hub today at KUSCCO Centre – Ground Floor – Kilimanjaro Avenue, Upper Hill or visit our virtual hub www.goodhome.co.ke to view our available properties. Alternatively, you can call us on **0711049739 or **0711049696** to get more information on these properties as well as available financing options.**

DISCLAIMER:

The Co-operative Bank of Kenya Limited, its directors, partners, employees and related entities responsible for preparing this property listing believe that the information carried therein is correct. However, no representation or warranties of any nature whatsoever are given, intended or implied, and as such, you should rely on your own enquiries to the accuracy of the information or material available from this listing.

Please note that information provided on this listing is general information and is subject to change without notice and should not be relied upon as a substitute for legal, financial, real estate or other expert advice. The Co-operative Bank of Kenya Limited disclaims all liability and responsibility including negligence for any direct and or indirect loss or damage suffered by any person or company arising out of any use of the listing or any information or material available from it.

Thank
You



CO-OPERATIVE BANK
We are you