



# CO-OPERATIVE BANK

We are you



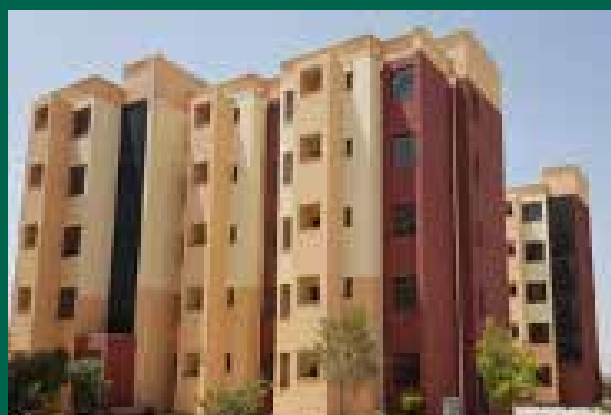
## GOODHOME MORTGAGE PROPERTY LISTING

January 2022



# RESIDENTIAL PROPERTIES

## APARTMENTS AT SABAKI (P002)



### LOCATION:

Sabaki, approximately 4.5Km off Mombasa Road from the Total Junction

### DESCRIPTION:

Bedsitters, studio, 1 & 2 bedroom apartments

### AMENITIES:

- Private club house
- Basketball court
- Access control system
- Nursery school
- Children's play area
- Swimming pool
- Bus park
- Shopping centre

### STATUS OF THE PROJECT:

Nearing Completion

### PRICE

TYPE	PLINTH AREA	PRICE	INDICATIVE RENT
Bedsitters	16 sqm	Ksh 1,155,000.00	Ksh 7,000.00
Studios	20 sqm	Ksh 1,760,000.00	Ksh 8,000.00
1 Bedroom	30 sqm	Ksh 2,530,000.00	Ksh 9,500.00
2 Bedroom	40 sqm	Ksh 3,190,000.00	Ksh 11,500.00
2 Bedroom (ensuite)	45 sqm	Ksh 3,630,000.00	Ksh 12,500.00

## APARTMENTS IN SYOKIMAU (P003)



### LOCATION:

Syokimau, approximately 800 metres off Mombasa Road before the Mlolongo Weighbridge

### DESCRIPTION:

1, 2 and 3 bedroom apartments

### AMENITIES:

- Master ensuite
- Open plan kitchen
- Laundry area
- Alarm system
- Perimeter wall
- Ample parking
- Children's play area
- Controlled access

### STATUS OF THE PROJECT:

Ready for occupation

### PRICE

TYPE	PLINTH AREA	PRICE	INDICATIVE RENT
2 Bedroom	74 sqm	Ksh 6,950,000.00	Ksh 28,000.00
3 Bedroom	96 sqm	Ksh 8,800,000.00	Ksh 35,000.00

## APARTMENTS IN RACECOURSE AREA (P004)



### LOCATION:

Racecourse Area, approximately 400 metres off Ngong Road

### DESCRIPTION:

Studios, 1 and 2 bedroom apartments

### AMENITIES:

- Rooftop garden
- Swimming pool
- Play area
- Commercial area
- Large central garden
- Ample parking
- Nursery school
- Borehole

### STATUS OF THE PROJECT:

Ready for occupation

### PRICE

TYPE	PLINTH AREA	PRICE	INDICATIVE RENT
Studios	25 sqm	Ksh 3,500,000.00	Ksh 25,000.00
Standard 1 Bedroom	37 sqm	Ksh 4,800,000.00	Ksh 35,000.00
Deluxe 1 Bedroom	40 sqm	Ksh 5,000,000.00	Ksh 38,000.00
2 Bedroom	72 sqm	Ksh 8,000,000.00	Ksh 45,000.00

## APARTMENTS IN RUAKA (P005)



### LOCATION:

Ruaka, approximately 200 metres from the bypass & opposite Joyland Supermarket

### DESCRIPTION:

2 & 3 Bedroom apartments all ensuite

### AMENITIES:

- Cabro- paved parking
- Fitted kitchen
- Perimeter wall
- Adequate water storage
- Spacious lounge

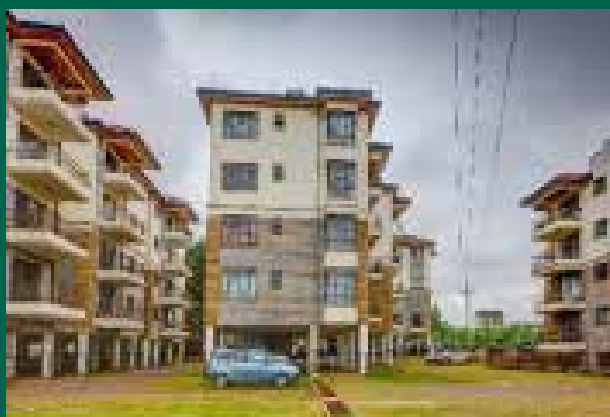
### STATUS OF THE PROJECT:

Ready for occupation.

### PRICE

TYPE	PLINTH AREA	PRICE	INDICATIVE RENT
2 Bedroom	92 sqm	Ksh 9,000,000	Ksh 45,000.00
3 Bedroom Duplex	186 sqm	Ksh 13,000,000	Ksh 60,000.00

## APARTMENTS IN RUAKA (P006)



### LOCATION:

Ruaka, approximately 200 metres off Limuru Road

### DESCRIPTION:

2 and 3 bedroom apartments (Master en-suite)

### AMENITIES:

- Cabro-paved driveways
- Ample parking
- Swimming pool
- CCTV
- Spacious balconies
- Green areas
- Electric fence
- Gym

### STATUS OF THE PROJECT:

Ready for occupation

### PRICE

TYPE	PLINTH AREA	PRICE	INDICATIVE RENT
2 Bedroom	82 sqm	Ksh10,000,000.00	Ksh 46,000.00
3 Bedroom	104 sqm	Ksh11,000,000.00	Ksh 56,000.00

## APARTMENTS IN MOWLEM AREA (P010)



### LOCATION:

Along Kangundo Road

### DESCRIPTION:

1, 2 and 3 bedroom apartments

### AMENITIES:

- Ample parking
- Commercial centre
- Perimeter wall
- Day care
- Sentry unit (Guard station)
- Gym
- Swimming pool
- DSTV

### STATUS OF THE PROJECT:

Ready for occupation

### PRICE

TYPE	OLD PRICE	PROMOTIONAL PRICE
1 Bedroom	Ksh 4,500,000.00	Ksh 3,800,000.00
2 Bedroom	Ksh 6,000,000.00	Ksh 5,000,000.00
3 Bedroom	Ksh 7,500,000.00	Ksh 6,000,000.00

## APARTMENTS IN PARKLANDS (P012)



### LOCATION:

Parklands, near The National Museums of Kenya

### DESCRIPTION:

Luxurious apartments in Parklands

### AMENITIES:

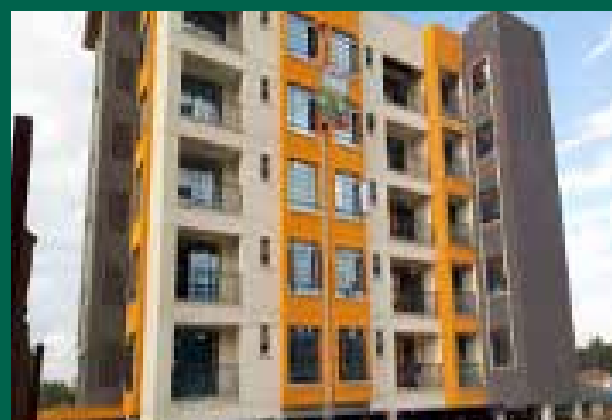
- Spacious lounge
- Good location
- Ample parking
- American kitchen
- High speed lifts
- Spacious dining area
- Pantry

### STATUS OF THE PROJECT:

Under construction

TYPE	PLINTH AREA	PRICE
2 bedroom	95 sqm	Ksh 12,500,000.00

## APARTMENTS IN NGONG TOWN (P019)



### LOCATION:

Ngong Town, near the Co-operative Bank Branch

### DESCRIPTION:

2 and 3 bedroom apartments (30 units total)

### AMENITIES:

- Lounge cum dining room
- Kitchen with pantry
- Master ensuite
- Boundary wall
- Adequate water storage
- 1 parking slot per apartment

### STATUS OF THE PROJECT:

Ready for Occupation

### PRICE

TYPE	PLINTH AREA	PRICE
2 Bedroom	86 sqm	Ksh 5,500,000.00
3 Bedroom	103 sqm	Ksh 6,500,000.00

## APARTMENTS AT VIPINGO (P020)



### LOCATION:

Vipingo town

### DESCRIPTION:

1, 2 & 3 bedroom apartments (330 units)

### AMENITIES:

- Paved roads
- Security patrols
- Playgrounds
- Ample parking
- Swimming pool
- Perimeter fence
- Kindergarten
- Reliable power connection
- CCTV surveillance

### STATUS OF THE PROJECT:

Ready for occupation

### PRICE

TYPE	PLINTH AREA	PRICE
3 Bedroom	75 sqm	Ksh 4,600,000.00



## STAND ALONE HOUSES AT VIPINGO (P021)



### LOCATION:

Vipingo Town

### DESCRIPTION:

Two bedroom bungalows (90 units) and three bedroom maisonettes (62 units); all ensuite

### AMENITIES:

- Parking for 2 cars
- Laundry area
- Adequate water storage
- Terraces
- Boundary wall

### STATUS OF THE PROJECT:

Under construction

### PRICE

TYPE	PLINTH AREA	PRICE
2 Bedroom Bungalows	155 sqm	Ksh 13,000,000.00
3 Bedroom Maisonette	210 sqm	Ksh 17,000,000.00

## APARTMENTS AT SABAKI (P023)



### LOCATION:

Sabaki area next to Signature mall along Mombasa Road.

### DESCRIPTION:

Studio apartments ideal for homestay investment with attractive daily income.

### AMENITIES:

- Cabro paved walkaways
- Perimeter walling
- Play area
- Laundry area
- Green areas and gardens
- Controlled access
- Rooftop
- Ample parking

### STATUS OF THE PROJECT:

Ready for occupation

### PRICE

TYPE	PLINTH AREA	PROMOTIONAL PRICE	ACTUAL PRICE
Standard Studio	21 sqm	Ksh 1,995,000.00	Ksh 2,600,000.00
Deluxe Studio	28 sqm	Ksh 2,755,000.00	Ksh 3,400,000.00

## ONE APARTMENT UNIT IN NYALI (P025)



### LOCATION:

Nyali, approximately 600M off Links Road

### DESCRIPTION:

3 bedroom apartment on first floor

### AMENITIES:

- Master en-suite
- Borehole on site
- Lounge Area
- Controlled access
- Laundry area
- Detached servants quarter
- Ample parking
- Activated rooftop (Terrace)

### STATUS OF THE PROJECT:

Ready for occupation

### PRICE

Ksh 13,000,000.00

## MAISONETTE IN SOUTH C (P027)



### LOCATION:

South C

### DESCRIPTION:

4 bedroom maisonette, complete with servants' quarters

### AMENITIES:

- Master ensuite
- Backyard and front yard
- Separate dining area
- Perimeter wall
- Electric fence
- Ample water storage

### STATUS OF THE PROJECT:

Ready for occupation

### PRICE

Ksh 20,000,000.00

## MANSION IN HARDY, KAREN (P030)



### LOCATION:

Hardy Area, Karen

### DESCRIPTION:

This is a double storey, 4 bedroom, all en-suite town house measuring 520 sqm, developed on half an acre

### AMENITIES:

- En-suite domestic servants' quarters
- Landscaped gardens
- Store block
- Gazebo
- Connection to electricity and water mains
- Gate house

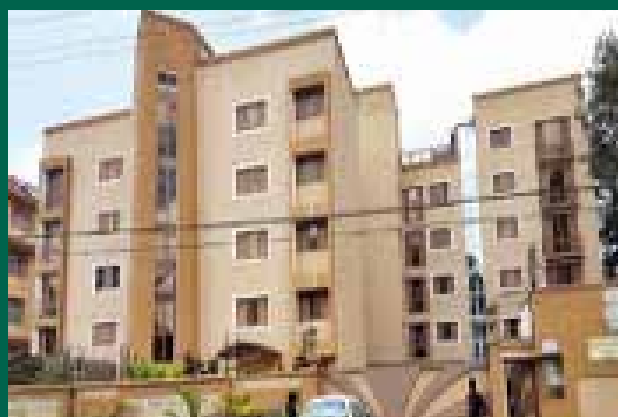
### STATUS OF THE PROJECT:

Ready for occupation

### PRICE

Ksh 130,000,000.00 (negotiable)

## SERVICED APARTMENT BLOCK IN LAVINGTON (P031)



### LOCATION:

Lavington, Nairobi.

### DESCRIPTION:

Fully furnished & serviced apartments comprising of 1- & 2-bedroom apartments developed on 0.755 of an acre

### AMENITIES:

- Fully furnished apartments
- Fully equipped kitchen and restaurant
- Manicured gardens
- Rooftop swimming pool
- Paved walk ways
- Ample basement parking
- Gym and spa
- Lift to all floors
- Back-up generator
- Perimeter wall
- Electric fence
- Controlled access

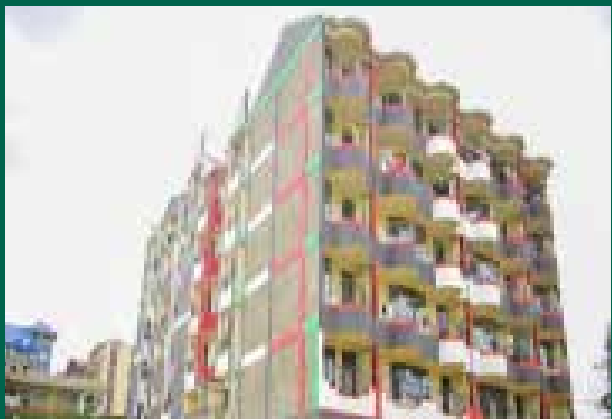
### STATUS OF THE PROJECT:

Ready for occupation

### PRICE

Ksh 675,000,000.00 (negotiable)

## APARTMENT BLOCK AT KAHAWA WENDANI (P032)



### LOCATION:

Kahawa Wendani, 1.2 km from Thika SuperHighway

### DESCRIPTION:

A block of apartments comprised of Studios, 1 Bedrooms and 2 Bedrooms

### AMENITIES:

- Constant water supply
- Access to public transport
- Fitted kitchen

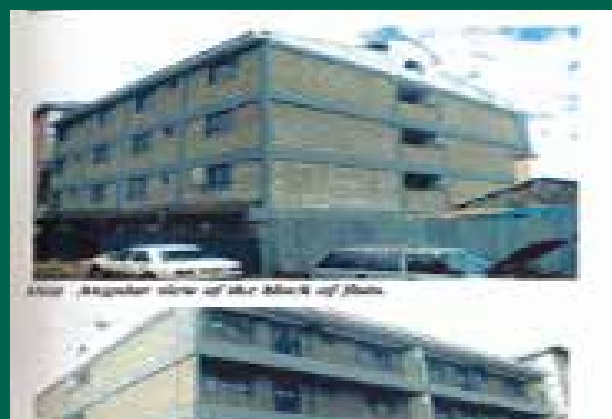
### STATUS OF THE PROJECT:

Ready for occupation and has tenants

**ASKING PRICE:** Ksh 130,000,000

TYPE	UNITS	INDICATIVE RENT
Studios	81	Ksh 10,000.00
1 Bedroom	6	Ksh 15,000.00
2 Bedroom	16	Ksh 20,000.00

## BLOCK OF APARTMENTS AT INDIES, ELDORET (P033)



### LOCATION:

Eldoret, 200 meters off Eldoret - Malaba highway

### DESCRIPTION:

Four story building comprised of 1 bedroom (1 unit) and 2 bedroom (15 units) flats.

### AMENITIES:

- Master ensuite
- Kitchen cabinets
- Murram access road
- Newly constructed
- Ready tenants
- Close proximity to Eldoret town

### STATUS OF THE PROJECT:

Ready for occupation and has tenants.

### PRICE

Ksh 50,000,000

Expected monthly rental income - Ksh 132,000.00



## APARTMENTS IN RUNDA (P036)



### LOCATION:

Within the mixed use development of Two Rivers Mall

### DESCRIPTION:

It is comprised of 1br,2br,3br,3br + Dsq Apartments & 3 Br Duplex Villas

### AMENITIES:

- Rooftop garden
- Mini-parks
- 7 - aside football pitch
- Swimming pool
- Children's playground
- Recreational centre
- Gym

### STATUS OF THE PROJECT:

Under construction

### PRICE

TYPE	PLINTH AREA	PRICE
<b>Prices for apartments</b>		
1 Bedroom	57 sqm	Ksh 8,500,000.00
2 Bedroom	90 sqm	Ksh 12,300,000.00
3 Bedroom	102 sqm	Ksh 14,400,000.00
3 Bedroom + DSQ	117 sqm	Ksh 16,500,000.00
<b>Prices for Duplex Villa Units</b>		
3 Bedroom + DSQ Type A Not Cascading	124 sqm	Ksh 18,190,000.00
3 Bedroom + DSQ Type B Cascading	140 sqm	Ksh 21,400,000.00
3 Bedroom + DSQ Type C Not Cascading	150 sqm	Ksh 23,000,000.00
3 Bedroom + DSQ Type D Cascading	158 sqm	Ksh 24,500,000.00

## APARTMENTS IN RUNDA (P037)



### LOCATION:

Within the mixed use development of Two Rivers Mall

### DESCRIPTION:

1,2 and 3 Bedroom apartments for sale

### AMENITIES:

- Internet provision
- DSTV connection
- Business centre with virtual offices
- Standby generator
- CCTV cameras
- Jacuzzi
- Soccer pitch
- Swimming pool
- Tennis court
- Yoga studio
- High speed lifts
- Video door phone

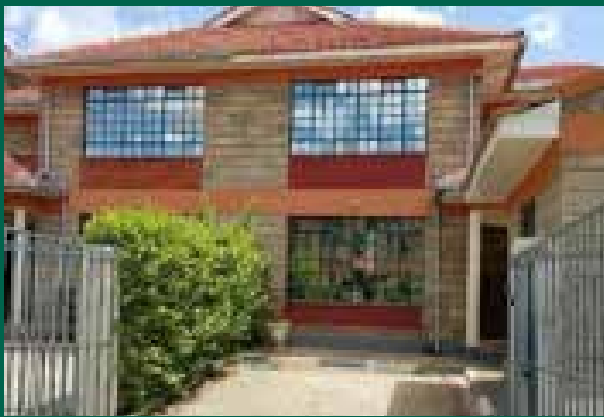
### STATUS OF THE PROJECT:

Under construction

### PRICE

TYPE	INDICATIVE PRICE
1 Bedroom	Ksh 16,000,000.00
2 Bedroom	Ksh 23,000,000.00
3 Bedroom	Ksh 30,000,000.00

## MAISONETTE ON MOMBASA ROAD (P039)



### LOCATION:

Along Mombasa Road

### DESCRIPTION:

4-bedroom master ensuite maisonette with a DSQ

### AMENITIES:

- Separate dining area
- Kitchen with pantry
- Laundry area
- 3 bathrooms
- Parking for 2 cars
- Children's play area
- Adequate water storage
- 24/7 security manned entrance gate
- Cloakroom

### STATUS OF THE PROJECT:

Ready for occupation

### PRICE

TYPE	PLINTH AREA	PRICE	INDICATIVE RENT
4 Bedroom	160 sqm	Ksh 16,000,000	Ksh 50,000.00

## APARTMENT IN KILIMANI (P042)



### LOCATION:

Kilimani along Kayahwe Road

### DESCRIPTION:

3 Bedroom master ensuite apartment

### AMENITIES:

- Guest cloakroom
- Kitchen with pantry
- Lounge cum dining area
- Laundry area
- Borehole
- Ample parking slots
- Estate boundary with electric fence
- Ample water storage

### STATUS OF THE PROJECT:

Ready for occupation

### PRICE

Ksh 13,500,000.00  
Indicative Rent – Ksh 75,000.00

## TOWN HOUSE IN SYOKIMAU (P044)



### LOCATION:

Along Mombasa Road – At Syokimau

### DESCRIPTION:

4 Bedroom semi-detached townhouse with SQ (Master en-suite)

### AMENITIES:

- En-suite guest bedroom
- Extra storage space
- Guest cloakroom
- 2 private parking slots
- Individual title deed
- Laundry area
- Estate boundary with electric fence
- Backyard
- Borehole

### STATUS OF THE PROJECT:

Ready for occupation

### PRICE

Ksh 11,500,000.00

## MAISONETTE IN LOWER KAREN PLAINS (P046)



### LOCATION:

Lower Karen Plains

### DESCRIPTION:

5-bedroom Maisonette, sitting on ½ an acre

### AMENITIES:

- 4 bathrooms
- DSQ
- Spacious lounge
- Ample water storage
- Manicured gardens
- Controlled access
- Ample parking

### STATUS OF THE PROJECT:

Ready for occupation

### PRICE

Ksh 58,000,000.00

## HOTEL APARTMENTS IN MTWAPA, KILIFI COUNTY (P048)



### LOCATION:

Mtwapa next to club Tropicana about 100 meters off Malindi Mombasa Road with an exit directly opposite National Bank of Kenya premises

### DESCRIPTION:

Hotel complex ready for daily bookings

### AMENITIES:

- Master en-suite
- Lounge area
- Laundry area
- Ample parking
- Borehole on site
- Spacious rooms
- Detached servants quarter
- Activated rooftop (Terrace)
- Controlled access

### STATUS OF THE PROJECT:

Ready for Rentals

### PRICE

Ksh 68,000,000.00

## BUNGALOW IN MLOLONGO (P049)



### LOCATION:

Along Mombasa Road – At Mlolongo, off Katani Road

### DESCRIPTION:

3 Bedroom Bungalow (Master en-suite)

### AMENITIES:

- 2 private parking slots
- Estate boundary with electric fence
- Laundry area
- Individual title deed
- Kitchen fitted with Kitchen cabinets
- Borehole

### STATUS OF THE PROJECT:

Ready for occupation

### PRICE

Ksh 9,000,000.00

## A BLOCK OF APARTMENTS IN NYANCHWA AREA KISII (P050)



### LOCATION:

Kisii county, Nyanchwa

### DESCRIPTION:

5 story block of flats comprising of 1 unit of shop, 5 units of 1 bedroom flats & 9 units of 2 bedroom flats on 0.0711 of an acre

### AMENITIES:

- Mains for electricity & water connected to the property
- Drainage is to septic tank/sewer line
- Area is covered by cellular mobile networks
- Floors are finished in ceramic tiles
- Stone perimeter wall
- Ready tenants
- Close proximity to Kisii town
- Burglar proof windows

### STATUS OF THE PROJECT:

Ready for occupation

PRICE	INDICATIVE RENT
Ksh 24,000,000.00	Ksh 177,000.00

## APARTMENTS IN KILELESHWA (P051)



### LOCATION:

Kileleshwa, off Othaya Road

### DESCRIPTION:

Elegant studios, one & two bedroom luxury apartments. Each apartment boasts of ultra-comfortable and spacious interior that make for a homely interior

### AMENITIES:

- Solar water heaters
- Rooftop lounge deck
- Equipped gym
- Backup generator
- Video Intercom
- Borehole
- High speed lifts
- Fitted kitchen with oven, extractor & microwave
- Electric fence

### STATUS OF THE PROJECT:

Construction ongoing

### PRICE

TYPE	PRICE FROM
Studios	Ksh 7,661,000.00
1 Bedroom	Ksh 9,139,000.00
2 Bedroom	Ksh 16,783,000.00

## GATED COMMUNITY IN KISAJU (P052)



### LOCATION:

Kisaju, off Namanga Road

### DESCRIPTION:

A modern estate sitting on 32 Acres comprising of 1,2 & 3 Bedroom apartments and Townhouses with & without DSQ to complement your contemporary lifestyle in a tranquil environment away from the flurry of the city

### AMENITIES:

- Ample parking
- Cabro paved Drive ways
- Two Boreholes
- Children Play ground
- Jogging Track
- Solar water heater
- Electric Fence
- Retail and commercial center

### APARTMENT PRICES

UNIT	PRICE
1 Bedroom	Ksh 1,906,000.00
2 Bedroom	Ksh 3,200,000.00
3 Bedroom	Ksh 3,800,000.00

### PRICES FOR TOWNHOUSES

DESCRIPTION	PRICE (KSH )
3 Bedroom without DSQ	Ksh 5,800,000.00
3 Bedroom with DSQ	Ksh 6,200,000.00



## APARTMENTS IN KITISURU (P053)



**LOCATION:**  
Kitsuru, off Lower Kabete

**DESCRIPTION:**  
3 Bedroom Apartments

**AMENITIES:**

- Ample parking
- Borehole
- Master En-suite
- Lifts
- Cabro paved compound
- Perimeter wall with electric fence

**STATUS OF THE PROJECT:**  
Ready for occupation

### PRICE

TYPE	PLINTH AREA	PRICE FROM
3 bedrooms + DSQ	123 Sqm	Ksh 10,900,000.00
3 bedroom	112 Sqm	Ksh 9,500,000.00

## APARTMENTS IN RUAKA (P054)



**LOCATION:**  
Ruaka, opposite Joyland Supermarket

**DESCRIPTION:**  
2 and 3 Bedroom apartments

**AMENITIES:**

- Borehole
- Solar water heating system
- Roof garden
- Clothes drying yard on roof
- Lift
- Children's play area
- Electric fence along the perimeter
- CCTV and backup generator for security
- Ample parking

**STATUS OF THE PROJECT:**  
Ready for occupation

TYPE	PRICE	INDICATIVE RENT
2 bedrooms	Ksh 7,500,000.00	Ksh 35,000.00
3 bedroom	Ksh 8,900,000.00	Ksh 40,000.00

## MAISONETTE IN SYOKIMAU (P055)



**LOCATION:**  
Syokimau, 900m from the tarmac from Mombasa Road

**DESCRIPTION:**  
The house has been converted into single rooms, bedsitters, and a one bedroom that are ideal for rental.

**STATUS OF THE PROJECT:**  
Ready for occupation

### PRICE

Ksh 30,000,000.00

## MAISONETTE ALONG KIAMBU ROAD (P056)



### LOCATION:

Located along Kiambu Road, Edenville Estate;

### DESCRIPTION:

3 bedroom maisonette master ensuit with Dsq

### AMENITIES:

- Gated community
- 24hr security
- Cabro paved walkways
- Parking for 2 cars and visitors parking
- Covered Garden Terrace

### PRICE

TYPE	PLINTH AREA	PRICE FROM
3 bedrooms + DSQ	159 sqm	Ksh 20,000,000.00

## APARTMENTS IN MOUNTAIN VIEW (P059)



### LOCATION:

Along Waiyaki Way, opposite Mountain view Total Petrol Station in Mountain View area

### DESCRIPTION:

1,2 & 3 all en-suite apartments on 0.1025 acres

### AMENITIES:

- Ample Parking
- DSTV
- Rooftop Sitting Area
- Laundry Area
- Gym
- Rooftop Swimming pool
- Sentry Unit (Guard Station)
- Perimeter wall
- Shower Cubicles

### STATUS OF THE PROJECT:

Under construction

### PRICE

TYPE	PLINTH AREA	PRICE
1 Bedroom	50 sqm	Ksh 6,500,000.00
2 Bedroom	113 sqm	Ksh 10,000,000.00
3 Bedroom	140 sqm	Ksh 13,000,000.00
3 Bedroom + DSQ	150 sqm	Ksh 14,000,000.00





# COMMERCIAL PROPERTIES

## OFFICE SPACE IN UPPER HILL (P007)



### LOCATION:

Upper Hill Area

### DESCRIPTION:

An Ultra-modern, state of the art, 18 storey office block set on 1 acre

### AMENITIES:

- Conference facilities
- Banking Hall
- Access control
- Generator
- CCTV Backed security
- ICT Structured Cabling
- 164 Parking Bays
- High speed Lifts
- Access control

### STATUS OF THE PROJECT:

Ready for Occupation

### PRICE

Ksh 145,000.00 per sqm and Ksh 1,000,000.00 per Parking slot

## OFFICE SPACE IN WESTLANDS (P022)



### LOCATION:

Westlands, off Waiyaki Way

### DESCRIPTION:

3 office suites measuring a total of 420 sqm in a well-maintained office block in Westlands.

### AMENITIES:

- 6 High speed lifts
- 24 hour security
- Boundary Wall
- Electric fence
- Full back-up generator
- 6 Parking slots including visitors' parking
- Bore hole on site
- Reliable water supply

### STATUS OF THE PROJECT:

Completed and occupied

### PRICE

SPACE AVAILABLE	PLINTH AREA	PRICE	INDICATIVE RENT
Three office suites on Tower 2	1510 sqft	Ksh 18,000,000.00	Ksh 100.00 per sqft

## COMMERCIAL BUILDING IN NYERI (P029)



### LOCATION:

Nyeri Town in the CBD.

### DESCRIPTION:

4 Storey commercial building (Ground plus four floors) complete with basement parking

### AMENITIES:

- Connection to main water & electricity
- Kitchenette and washrooms for all floors
- Overhead and basement water storage
- High speed lifts

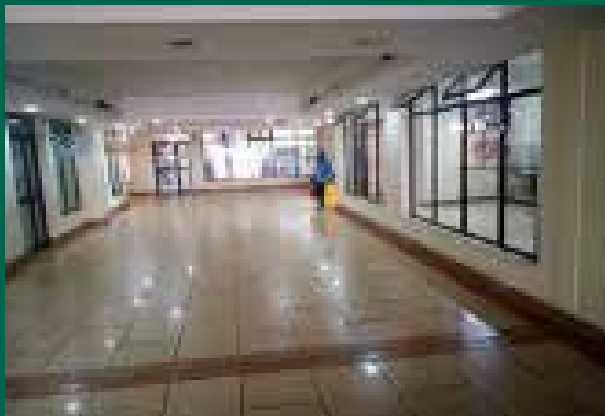
### STATUS OF THE PROJECT:

Ready for occupation

### PRICE

Ksh 150,000,000.00

## OFFICE SPACE ON MOMBASA ROAD (P034)



### LOCATION:

Mombasa Road next to Nextgen Mall

### DESCRIPTION:

4 units office space for sale

### AMENITIES:

- Washrooms
- Ample parking
- Lifts
- CCTV Cameras
- Chute facilities
- Standby generator

### STATUS OF THE PROJECT:

Ready for occupation

### PRICE

**Ksh 11,000,000.00 each**

Indicative Monthly Rent - Ksh 81,500.00 per month

## OFFICE BLOCK ON RIVERSIDE DRIVE (P041)



### LOCATION:

Riverside Drive

### DESCRIPTION:

Office and related facilities, car parking spaces and other common areas in a serene and secure environment, which is easily accessible and next to the road, Riverside Drive.

Boundaries to the property are marked off by stone masonry wall topped up with an electric fence.

### AMENITIES:

- Ample water supply & borehole connection
- Open work spaces & meeting rooms
- Paved driveway & parking
- Visitors lounge, washrooms
- Access control & CCTV
- Lactation room
- Connection to electricity mains
- Kitchen parlour & breakout area
- Power backup generator
- Storage rooms
- Lift to all floors

### STATUS OF THE PROJECT:

Ready for occupation

### PRICE:

**Accepting Offers**





# LAND & PLOTS

## RESIDENTIAL PLOTS IN KIKAMBALA (PL003)

**LOCATION:**  
Kikambala

**DESCRIPTION:**  
Eighth of an acre (50 X 100) residential plots

- AMENITIES:**
- Perimeter wall round the entire project
  - Electricity available for connection
  - Internal roads to murram level
  - Bore hole and piped water to every plot
  - Sewer system (to link to a proposed treatment plant)
  - Storm water drainage.

**Price: Ksh 2,200,000.00**

## RESIDENTIAL PLOTS IN THIKA (PL004)

**LOCATION:**  
Off Thika-Gatanga Road.

**DESCRIPTION:**  
Quarter acre (100 X 100) residential plots

- AMENITIES:**
- Controlled development in a gated community
  - Red soil
  - Tarmacked and murram graded roads
  - Perimeter wall
  - Distinct predetermined house designs

**Price: Ksh 5,500,000.00 (Negotiable)**

## RESIDENTIAL PLOTS IN THIKA (PL005)

**LOCATION:**  
Along Gatanga Road

**DESCRIPTION:**  
Blocks of land ranging from 5 acre blocks up to 115-acre blocks

- AMENITIES:**
- Murram graded internal roads
  - Close proximity to Thika-Gatanga Road
  - Well drained red soils

**Price: Ksh 14,500,000.00 per acre (Negotiable)**

## MIXED USE LAND IN NGOLIBA, THIKA (PL010)

**LOCATION:**

Ngoliba area off Thika Road near Kenchic area  
Access from the Thika – Garissa Highway is via the Makuyu – Ithanga – Gati-iguru Road (recently tarmacked) approximately 8Km in

**DESCRIPTION:**  
Various residential and commercial plots.

- AMENITIES:**
- Tarmac access from main road
  - Murram level driveways
  - Proximity to KPLC connection point

TYPE	Price
Eighth of an acre	Ksh 800,000.00
Quarter of an acre	Ksh 1,025,000.00
Half an acre	Ksh 1,600,000.00
One acre	Ksh 2,900,000.00
Commercial Plots (40 X 80)	Ksh 1,100,000.00

## LAND IN KISERIAN (PL012)

**LOCATION:**  
In Olchoro Onyore, next to Oloonton Anglican Church  
Access from Kiserian Township is 4km via the Kiserian – Isinya Road and 10 Km into Onyore via a murram road

**DESCRIPTION:**  
Eight acres of agricultural land on Free hold title

- AMENITIES:**
- Nearby electricity mains for connection
  - Water available from private boreholes
  - Immediate access to murram standard roads

**Price: Ksh 9,600,000.00**

## LAND IN KAJIADO (PL014)

**LOCATION:**  
Kajiado Town near UMMA University approximately 1.5Km off Namanga Road in Dalalekutuk Area

**DESCRIPTION:**  
200 acres accessible via an all-weather road and on free hold title

**Price: Ksh 3,660,000.00 per acre**

## LAND IN KAJIADO (PL015)

### LOCATION:

Kajiado Town near Naisula School approximately 1.7Km off Namanga Road in Dalalekutuk Area

### DESCRIPTION:

120 acres accessible via an all-weather road and on free hold title

**Price: Ksh 3,900,000.00 per acre**

## LAND IN ISINYA – KISAJU AREA (PL016)

### LOCATION:

Isinya approximately 7 Km from Isinya Township and 800 M off the Isinya – Kiserian Road

### DESCRIPTION:

192 acres accessible via an all-weather road and on free hold title

**Price: Ksh 3,900,000.00 per acre**

## LAND IN KAMITI AREA (PL017)

### LOCATION:

Kamiti in Kiambu County on Kamiti Forest Road off Ruiru Road and adjacent to Tatu City, fronting Mukuyu River

### DESCRIPTION:

200 acres accessible via an all-weather road and on free hold title

**Price: Ksh 25,000,000.00 per acre**

## RESIDENTIAL PLOTS IN THIKA (PL021)

### LOCATION:

Off Thika - Gatanga Road

### DESCRIPTION:

Eighth of an acre (50 X 100) residential plots, set in a secured, controlled and gated community

### AMENITIES:

- Murram graded internal roads
- Masonry and chain link perimeter
- Commercial zone fronting the road
- Predetermined house designs
- Street lighting
- Children's play area
- Jogging track and foot paths
- Red soils

**Price:**  
**Ksh 2,700,000.00 for eighth of an acre plot**  
**Ksh 5,100,000.00 for quarter of an acre plot**

## RESIDENTIAL PLOTS IN MERISHO, MATASIA (PL022)

### LOCATION:

Merisho Area, approximately 3km from Matasia Trading Centre

### DESCRIPTION:

Quarter of an acre (100 X 100) residential plots

### AMENITIES:

- Immediate access to murram standard roads
- Close proximity to schools, hospitals and other social amenities.
- Water from nearby connection points
- Nearby electricity mains for connection

**Price: Ksh 4,500,000.00 (Negotiable)**

## RESIDENTIAL PLOTS IN KITENGELA (PL026)

### LOCATION:

Kitengela 2 Km off Namanga Road and adjacent to Kampala International University

### DESCRIPTION:

1/8 Acre plots for sale

### AMENITIES:

- Fence and gate
- Controlled development
- Easy access
- Ready titles

**Price: Ksh 1,300,000.00 for 1/8 of an acre**

## LAND ALONG LIMURU ROAD (PL027)

### LOCATION:

Along Limuru Road at Redhill after Kiambu Road

### DESCRIPTION:

Block of 17.16 Acres of land

### AMENITIES:

- Proximity to shopping malls
- Ideal for commercial and residential developments
- Well drained red soil
- Access to electricity and water

**Price: Ksh. 520,000,000.00 (Negotiable)**



## GOLF RESORT IN MAKUYU, MURANGA COUNTY (PL028)

### LOCATION:

Makuyu in Muranga county

### DESCRIPTION:

A golf estate comprising of plots ideal for residential, retirement and holiday homes, the project will be fully serviced.

### AMENITIES:

- Water and electricity
- A modern paved road network
- A comprehensive sewage system
- Internet connectivity
- CCTV and other internal security measures, including a fire station and a police post

**Price: Ksh 4,500,000.00 for a quarter of an acre**

## LAND FOR SALE (PL029)

### LOCATION:

Muthaiga North approximately 1.5 kms off Kiambu Road; turning off and to the right from Nairobi at Rock City Garden & borders Balozi Estate to the west

### DESCRIPTION:

9 acre piece of land

### AMENITIES:

- Touching tarmac
- Borehole on site
- Connection to electricity mains
- Perimeter wall fencing
- Indigenous trees on site

### STATUS OFF THE PROJECT:

Ready for development or subdivision and sale as plots

**Price: Ksh 750,000,000.00**

## RESIDENTIAL PLOT IN KAREN (PL0030)

### LOCATION:

Karen, 10 Korongo Road

### DESCRIPTION:

1/2 acre parcel of land in Karen

**PRICE**  
**Ksh 35,000,000.00**

## COMMERCIAL PLOT IN NANYUKI (PL0031)

### LOCATION:

Nanyuki Town (CBD)

### DESCRIPTION:

1/8th Acre commercial plot

### AMENITIES

- Connection to power mains
- Access to banks, malls and social amenities
- Ideal for construction of commercial buildings or shopping complex

**Price: Ksh 40,000,000.00**

## PRIME LAND IN SPRING VALLEY (PL043)

### LOCATION:

Adjacent to Spring Valley roundabout off Kabete road

### DESCRIPTION:

This is a prime 2.15 acres piece of Land in Spring valley.

### AMENITIES:

- Connection to electricity, water and sewer mains
- Possible access via 2 other roads – Shanzu Link and Shanzu Road
- Masonry perimeter walling round the entire property
- Fairly flat with a regular shape
- Red loamy soils and mature trees
- Strategically located near social amenities

**Price:**  
**Accepting offers**

## PRIME LAND FOR SALE IN KIKUYU (PL048)

### LOCATION:

Kikuyu Area, Kiambu County

### DESCRIPTION:

Available from 1 acre.

### AMENITIES:

- Close proximity to the Southern Bypass
- 3 km from Kikuyu Town
- Ideal for both residential and commercial use
- Connection to electricity and water mains
- Gently sloping, hence ideal for development
- Red soil

**Price:**  
**From Ksh 48,000,000.00**

## LAND IN KAJIADO (PL049)

### LOCATION:

Located in Kajiado County, 1.4km from Mailua Trading Centre, next to Sere Primary School.

### DESCRIPTION:

20 acre piece of land

Ideal for farming

The title is Freehold

**Price: Ksh 250,000.00 per acre, selling as a block of 20 acre**

## LAND IN ISINYA (PL050)

### LOCATION:

Located along Natendereti area, Kipeto Sublocation, Isinya. 2.5Km from Isinya Shopping centre

### DESCRIPTION:

1 acre piece of land

Ideal for immediate development or farming

Title is freehold

**Price: Ksh 4,500,000.00**

## PLOTS FOR SALE IN RUIRU (PL051)

**LOCATION:**  
14 Kms (15 minutes drive) from Thika superhighway accessed through Ruiru town or Kimbo Junction

**DESCRIPTION:**  
Residential plots in a gated community

- AMENITIES:**
- Perimeter fence
  - Borehole
  - Recreational Park & Children's playground
  - Electricity available
  - Upgrading of the main road to Bitumen standards

Price: Ksh 1,950,000.00 for 1/8 of an acre

## COMMERCIAL PLOT ON RHAPTA ROAD (PL057)

**LOCATION:**  
Raphta Road

**DESCRIPTION:**  
One acre of prime Land in Westlands that could be developed into an office block, residential apartments, a commercial center or a hotel.

- AMENITIES:**
- Connection to sewer system
  - Power supply
  - Water connection
  - Immediate access to Raphta Road
  - Perimeter wall

**STATUS OF THE PROJECT:**  
Ready for immediate development

Price: Ksh 270,000,000.00

## LAND IN MOWLEM AREA (PL059)

**LOCATION:**  
300m off Komarock road in Mowlem area Nairobi and next to Tononoka Rolling Mills.

**DESCRIPTION:**  
24.85 Acres parcel of land that is rectangular shaped, fairly level and with mixed soil . Part of the land is enclosed with razor wire and electric fence while the rest is open.

- AMENITIES:**
- Perimeter wall
  - Electric Fence
  - Scrap metal yard
  - Workshop
  - Office Block
  - Control room

Price: Ksh 1,200,000,000.00

## LAND FOR SALE IN MAGANA AREA, THIKA (PL060)

**LOCATION:**  
Magana area, Kiambu county 4.6 Km off Thika Garissa Highway

**DESCRIPTION:**  
3-acre agricultural land within a residential neighborhood.

**STATUS OF THE PROJECT:**  
Ready for development freehold titles

Asking Price: Ksh 4,100,000.00



**Visit our physical Property Hub today at KUSCCO Centre – Ground Floor – Kilimanjaro Avenue, Upper Hill or visit our virtual hub [www.goodhome.co.ke](http://www.goodhome.co.ke) to view our available properties. Alternatively, you can call us on **071 1049739** or **071 1049696** to get more information on these properties as well as available financing options.**

**DISCLAIMER:**

The Co-operative Bank of Kenya Limited, its directors, partners, employees and related entities responsible for preparing this property listing believe that the information carried therein is correct. However, no representation or warranties of any nature whatsoever are given, intended or implied, and as such, you should rely on your own enquiries to the accuracy of the information or material available from this listing.

Please note that information provided on this listing is general information and is subject to change without notice and should not be relied upon as a substitute for legal, financial, real estate or other expert advice. The Co-operative Bank of Kenya Limited disclaims all liability and responsibility including negligence for any direct and or indirect loss or damage suffered by any person or company arising out of any use of the listing or any information or material available from it.

Thank  
You



**CO-OPERATIVE BANK**  
We are you