



**CO-OPERATIVE BANK**

We are you

# GOODHOME MORTGAGE PROPERTY LISTING



**June 2022**



# RESIDENTIAL PROPERTIES

## APARTMENTS AT SABAKI (P002)



### LOCATION:

Sabaki, approximately 4.5Km off Mombasa Road from the Total Junction

### DESCRIPTION:

Bedsitters, studio, 1 & 2 bedroom apartments

### AMENITIES:

- Private club house
- Basketball court
- Access control system
- Nursery school
- Children's play area
- Swimming pool
- Bus park
- Shopping centre

### STATUS OF THE PROJECT:

Nearing Completion

### PRICE

TYPE	PLINTH AREA	PRICE	INDICATIVE RENT
Bedsitters	16 sqm	Ksh 1,155,000.00	Ksh 7,000.00
Studios	20 sqm	Ksh 1,760,000.00	Ksh 8,000.00
1 Bedroom	30 sqm	Ksh 2,530,000.00	Ksh 9,500.00
2 Bedroom	40 sqm	Ksh 3,190,000.00	Ksh 11,500.00
2 Bedroom (ensuite)	45 sqm	Ksh 3,630,000.00	Ksh 12,500.00

## APARTMENTS IN SYOKIMAU (P003)



### LOCATION:

Syokimau, approximately 800 metres off Mombasa Road before the Mlolongo Weighbridge

### DESCRIPTION:

1, 2 and 3 bedroom apartments

### AMENITIES:

- Master ensuite
- Open plan kitchen
- Laundry area
- Alarm system
- Perimeter wall
- Ample parking
- Children's play area
- Controlled access

### STATUS OF THE PROJECT:

Ready for occupation

### PRICE

TYPE	PLINTH AREA	PRICE	INDICATIVE RENT
2 Bedroom	74 sqm	Ksh 6,950,000.00	Ksh 28,000.00
3 Bedroom	96 sqm	Ksh 8,800,000.00	Ksh 35,000.00

## APARTMENTS IN RACECOURSE AREA (P004)



### LOCATION:

Racecourse Area, approximately 400 metres off Ngong Road

### DESCRIPTION:

Studios, 1 and 2 bedroom apartments

### AMENITIES:

- Rooftop garden
- Swimming pool
- Play area
- Commercial area
- Large central garden
- Ample parking
- Nursery school
- Borehole

### STATUS OF THE PROJECT:

Ready for occupation

### PRICE

TYPE	PLINTH AREA	PRICE	INDICATIVE RENT
Studios	25 sqm	Ksh 3,500,000.00	Ksh 25,000.00
Standard 1 Bedroom	37 sqm	Ksh 4,800,000.00	Ksh 35,000.00
Deluxe 1 Bedroom	40 sqm	Ksh 5,000,000.00	Ksh 38,000.00
2 Bedroom	72 sqm	Ksh 8,000,000.00	Ksh 45,000.00

## APARTMENTS IN RUAKA (P005)



### LOCATION:

Ruaka, approximately 200 metres from the bypass & opposite Joyland Supermarket

### DESCRIPTION:

2 & 3 Bedroom apartments all ensuite

### AMENITIES:

- Cabro-paved parking
- Fitted kitchen
- Perimeter wall
- Adequate water storage
- Spacious lounge

### STATUS OF THE PROJECT:

Ready for occupation.

### PRICE

TYPE	PLINTH AREA	PRICE	INDICATIVE RENT
2 Bedroom	92 sqm	Ksh 9,000,000.00	Ksh 45,000.00
3 Bedroom Duplex	186 sqm	Ksh 13,000,000.00	Ksh 60,000.00

## APARTMENTS IN RUAKA (P006)



### LOCATION:

Ruaka, approximately 200 metres off Limuru Road

### DESCRIPTION:

2 and 3 bedroom apartments (Master en-suite)

### AMENITIES:

- Cabro-paved driveways
- Ample parking
- Swimming pool
- CCTV
- Spacious balconies
- Green areas
- Electric fence
- Gym

### STATUS OF THE PROJECT:

Ready for occupation

### PRICE

TYPE	PLINTH AREA	PRICE	INDICATIVE RENT
2 Bedroom	82 sqm	Ksh10,000,000.00	Ksh 46,000.00
3 Bedroom	104 sqm	Ksh11,000,000.00	Ksh 56,000.00

## APARTMENTS IN MOWLEM AREA (P010)



### LOCATION:

Along Kangundo Road

### DESCRIPTION:

1, 2 and 3 bedroom apartments

### AMENITIES:

- Ample parking
- Sentry unit (Guard station)
- Commercial centre
- Gym
- Perimeter wall
- Swimming pool
- Day care
- DSTV

### STATUS OF THE PROJECT:

Ready for occupation

### PRICE

TYPE	OLD PRICE	PROMOTIONAL PRICE
1 Bedroom	Ksh 4,500,000.00	Ksh 3,800,000.00
2 Bedroom	Ksh 6,000,000.00	Ksh 5,000,000.00
3 Bedroom	Ksh 7,500,000.00	Ksh 6,000,000.00

## MAISONETTE IN LANG'ATA (P011)



### LOCATION:

Southlands Estate in Langata, Nairobi County

### DESCRIPTION:

3 Bedroom semi-detached Maisonette and a domestic servant quarter

### AMENITIES:

- Dining area
- Open Car port
- Elevated water Tank
- Spacious dining area
- Cabro Paved Parking
- Connection to electricity, sewer services and water mains

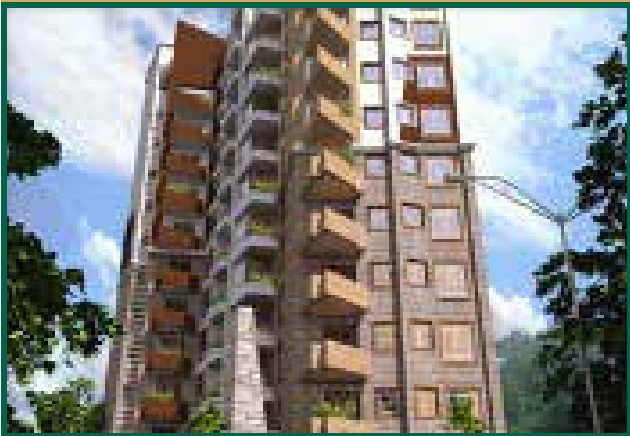
### STATUS OF THE PROJECT:

Ready for occupation

### PRICE

**Ksh 17,000,000.00**

## APARTMENTS IN PARKLANDS (P012)



### LOCATION:

Parklands, near The National Museums of Kenya

### DESCRIPTION:

Luxurious apartments in Parklands

### AMENITIES:

- Spacious lounge
- High speed lifts
- Good location
- Spacious dining area
- Ample parking
- Pantry
- American kitchen

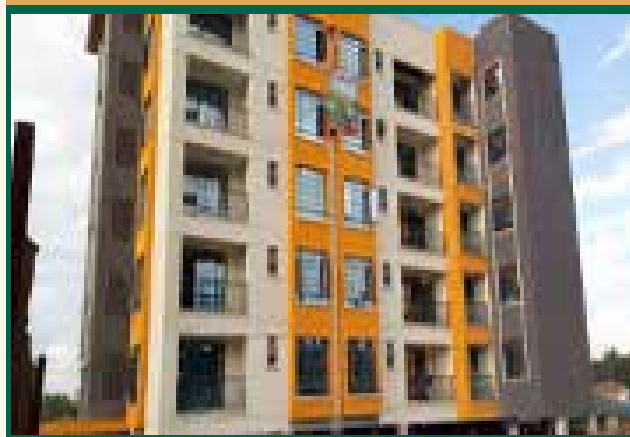
### STATUS OF THE PROJECT:

Under construction

### PRICE

TYPE	PLINTH AREA	PRICE
2 bedroom	95 sqm	<b>Ksh 12,500,000.00</b>

## APARTMENTS IN NGONG TOWN (P019)



### LOCATION:

Ngong Town, near the Co-operative Bank Branch

### DESCRIPTION:

2 and 3 bedroom apartments (30 units total)

### AMENITIES:

- Lounge cum dining room
- Boundary wall
- Kitchen with pantry
- Adequate water storage
- Master ensuite
- 1 parking slot per apartment

### STATUS OF THE PROJECT:

Ready for Occupation

### PRICE

TYPE	PLINTH AREA	PRICE
2 Bedroom	86 sqm	<b>Ksh 5,500,000.00</b>
3 Bedroom	103 sqm	<b>Ksh 6,500,000.00</b>

## APARTMENTS AT VIPINGO (P020)



**LOCATION:**  
Vipingo town

**DESCRIPTION:**  
1, 2 & 3 bedroom apartments (330 units)

**AMENITIES:**

- Paved roads
- Ample parking
- Kindergarten
- Security patrols
- Swimming pool
- Reliable power connection
- Playgrounds
- Perimeter fence
- CCTV surveillance

**STATUS OF THE PROJECT:**  
Ready for occupation

### PRICE

TYPE	PLINTH AREA	PRICE
3 Bedroom	75 sqm	Ksh 4,600,000.00

## STAND ALONE HOUSES AT VIPINGO (P021)



**LOCATION:**  
Vipingo Town

**DESCRIPTION:**  
Two bedroom bungalows (90 units) and three bedroom maisonettes (62 units); all ensuite

**AMENITIES:**

- Parking for 2 cars
- Laundry area
- Adequate water storage
- Terraces
- Boundary wall

**STATUS OF THE PROJECT:**  
Under construction

### PRICE

TYPE	PLINTH AREA	PRICE
2 Bedroom Bungalows	155 sqm	Ksh 13,000,000.00
3 Bedroom Maisonette	210 sqm	Ksh 17,000,000.00

## APARTMENTS AT SABAKI (P023)



**LOCATION:**  
Sabaki area next to Signature mall along Mombasa Road.

**DESCRIPTION:**  
Studio apartments ideal for homestay investment with attractive daily income.

**AMENITIES:**

- Cabro paved walkways
- Green areas and gardens
- Perimeter walling
- Controlled access
- Play area
- Rooftop
- Laundry area
- Ample parking

**STATUS OF THE PROJECT:**  
Ready for occupation

### PRICE

TYPE	PLINTH AREA	PROMOTIONAL PRICE	ACTUAL PRICE
Standard Studio	21 sqm	Ksh 1,995,000.00	Ksh 2,600,000.00
Deluxe Studio	28 sqm	Ksh 2,755,000.00	Ksh 3,400,000.00

## ONE APARTMENT UNIT IN NYALI (P025)



### LOCATION:

Nyali, approximately 600M off Links Road

### DESCRIPTION:

3 bedroom apartment on first floor

### AMENITIES:

- Master en-suite
- Lounge Area
- Borehole on site
- Controlled access
- Laundry area
- Ample parking
- Detached servants quarter
- Activated rooftop (Terrace)

### STATUS OF THE PROJECT:

Ready for occupation

### PRICE

Ksh 13,000,000.00

## MANSION IN HARDY, KAREN (P030)



### LOCATION:

Hardy Area, Karen

### DESCRIPTION:

This is a double storey, 4 bedroom, all en-suite town house measuring 520 sqm, developed on half an acre

### AMENITIES:

- En-suite domestic servants' quarters
- Connection to electricity and water mains
- Gate house
- Store block
- Gazebo
- Landscaped gardens

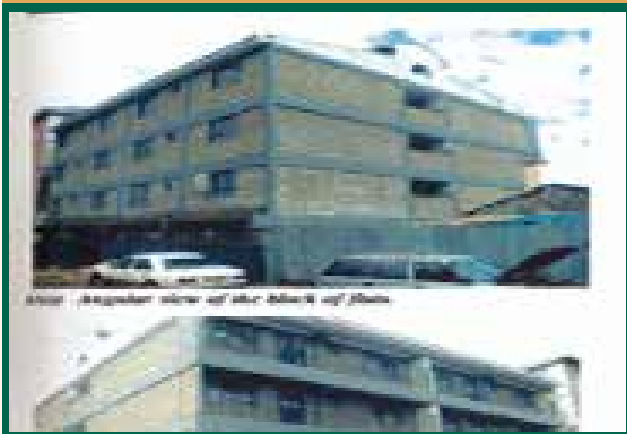
### STATUS OF THE PROJECT:

Ready for occupation

### PRICE

Accepting Offers

## BLOCK OF APARTMENTS AT INDIES, ELDORET (P033)



### LOCATION:

Eldoret, 200 meters off Eldoret - Malaba highway

### DESCRIPTION:

Four story building comprised of 1 bedroom (1 unit) and 2 bedroom (15 units) flats.

### AMENITIES:

- Master ensuite
- Newly constructed
- Kitchen cabinets
- Ready tenants
- Murram access road
- Close proximity to Eldoret town

### STATUS OF THE PROJECT:

Ready for occupation and has tenants.

### PRICE

Ksh 50,000,000.00  
Expected monthly rental income - Ksh 132,000.00

## APARTMENTS IN RUNDA (P036)



### LOCATION:

Within the mixed use development of Two Rivers Mall

### DESCRIPTION:

1br,2br,3br,3br + Dsq Apartments & 3 Br Duplex Villas

### AMENITIES:

- Rooftop garden
- Mini-parks
- Swimming pool
- Children's playground
- 7 - aside football pitch
- Recreational centre
- Gym

### STATUS OF THE PROJECT:

Under construction

### PRICE

TYPE	PLINTH AREA	PRICE
<b>Prices for apartments</b>		
1 Bedroom	57 sqm	Ksh 8,500,000.00
2 Bedroom	90 sqm	Ksh 12,300,000.00
3 Bedroom	102 sqm	Ksh 14,400,000.00
3 Bedroom + DSQ	117 sqm	Ksh 16,500,000.00
<b>Prices for Duplex Villa Units</b>		
3 Bedroom + DSQ Type A Not Cascading	124 sqm	Ksh 18,190,000.00
3 Bedroom + DSQ Type B Cascading	140 sqm	Ksh 21,400,000.00
3 Bedroom + DSQ Type C Not Cascading	150 sqm	Ksh 23,000,000.00
3 Bedroom + DSQ Type D Cascading	158 sqm	Ksh 24,500,000.00

## APARTMENTS IN RUNDA (P037)



### LOCATION:

Within the mixed use development of Two Rivers Mall

### DESCRIPTION:

1,2 and 3 Bedroom apartments for sale

### AMENITIES:

- Internet provision
- Standby generator
- Soccer pitch
- Yoga studio
- DSTV connection
- CCTV cameras
- Swimming pool
- High speed lifts
- Business centre with virtual offices
- Jacuzzi
- Tennis court
- Video door phone

### STATUS OF THE PROJECT:

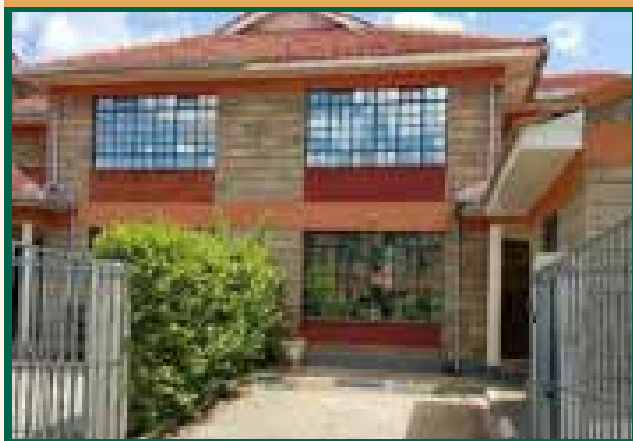
Under construction

### PRICE

TYPE	INDICATIVE PRICE
1 Bedroom	Ksh 16,000,000.00
2 Bedroom	Ksh 23,000,000.00
3 Bedroom	Ksh 30,000,000.00



## MAISONETTE ON MOMBASA ROAD (P039)



**LOCATION:**  
Along Mombasa Road

**DESCRIPTION:**  
4 bedroom master ensuite maisonette with a DSQ

**AMENITIES:**

- Separate dining area
- 3 bathrooms
- Adequate water storage
- Kitchen with pantry
- Parking for 2 cars
- 24/7 security manned entrance gate
- Laundry area
- Children's play area
- Cloakroom

**STATUS OF THE PROJECT:**  
Ready for occupation

### PRICE

TYPE	PLINTH AREA	PRICE	INDICATIVE RENT
4 Bedroom	160 sqm	Ksh 16,000,000.00	Ksh 50,000.00

## TOWN HOUSE IN SYOKIMAU (P044)



**LOCATION:**  
Along Mombasa Road – At Syokimau

**DESCRIPTION:**  
4 Bedroom semi-detached townhouse with SQ (Master en-suite)

**AMENITIES:**

- En-suite guest bedroom
- Guest cloakroom
- Individual title deed
- Extra storage space
- 2 private parking slots
- Laundry area
- Borehole
- Backyard
- Estate boundary with electric fence

**STATUS OF THE PROJECT:**  
Ready for occupation

### PRICE

Ksh 11,500,000.00

## HOTEL APARTMENTS IN MTWAPA, KILIFI COUNTY (P048)



**LOCATION:**  
Mtwapa next to club Tropicana about 100 meters off Malindi Mombasa Road with an exit directly opposite National Bank of Kenya premises

**DESCRIPTION:**  
Hotel complex ready for daily bookings

**AMENITIES:**

- Master en-suite
- Lounge area
- Laundry area
- Borehole on site
- Spacious rooms
- Detached servants quarter
- Controlled access
- Ample parking
- Activated rooftop (Terrace)

**STATUS OF THE PROJECT:**  
Ready for Rentals

### PRICE

Ksh 68,000,000.00

## BUNGALOW IN MLOLONGO (P049)



### LOCATION:

Along Mombasa Road – At Mlolongo, off Katani Road

### DESCRIPTION:

3 Bedroom Bungalow (Master en-suite)

### AMENITIES:

- 2 private parking slots
- Estate boundary with electric fence
- Laundry area
- Individual title deed
- Kitchen fitted with Kitchen cabinets
- Borehole

### STATUS OF THE PROJECT:

Ready for occupation

### PRICE

**Ksh 9,000,000.00**

## A BLOCK OF APARTMENTS IN NYANCHWA AREA KISII (P050)



### LOCATION:

Kisii County, Nyanchwa

### DESCRIPTION:

5 story block of flats comprising of 1 unit of shop, 5 units of 1 bedroom flats & 9 units of 2 bedroom flats on 0.0711 of an acre

### AMENITIES:

- Mains for electricity & water connected to the property
- Stone perimeter wall
- Drainage to septic tank/sewer line
- Ready tenants
- Area is covered by cellular mobile networks
- Close proximity to Kisii town
- Floors are finished in ceramic tiles
- Burglar proof windows

### STATUS OF THE PROJECT:

Ready for occupation

### PRICE

PRICE	INDICATIVE RENT
<b>Ksh 24,000,000.00</b>	<b>Ksh 177,000.00</b>

## APARTMENTS IN KILELESHWA (P051)



### LOCATION:

Kileleshwa, off Othaya Road

### DESCRIPTION:

Elegant studios, one & two bedroom luxury apartments. Each apartment boasts of ultra-comfortable and spacious interior that make for a homely interior

### AMENITIES:

- Solar water heaters
- Backup generator
- High speed lifts
- Rooftop lounge deck
- Video Intercom
- Fitted kitchen with oven, extractor & microwave
- Equipped gym
- Borehole
- Electric fence

### STATUS OF THE PROJECT:

Construction ongoing

### PRICE

TYPE	PRICE FROM
<b>Studios</b>	<b>Ksh 7,661,000.00</b>
<b>1 Bedroom</b>	<b>Ksh 9,139,000.00</b>
<b>2 Bedroom</b>	<b>Ksh 16,783,000.00</b>

## GATED COMMUNITY IN KISAJU (P052)



### LOCATION:

Kisaju, off Namanga Road

### DESCRIPTION:

A modern estate sitting on 32 Acres comprising of 1,2 & 3 Bedroom apartments and Townhouses with & without DSQ to complement your contemporary lifestyle in a tranquil environment away from the flurry of the city

### AMENITIES:

- Ample parking
- Cabro paved Drive ways
- Two Boreholes
- Children Play ground
- Jogging Track
- Solar water heater
- Electric Fence
- Retail and commercial center

### APARTMENT PRICES

UNIT	PRICE
1 Bedroom	Ksh 1,906,000.00
2 Bedroom	Ksh 3,200,000.00
3 Bedroom	Ksh 3,800,000.00

### PRICES FOR TOWNHOUSES

DESCRIPTION	PRICE (KSH)
3 Bedroom without DSQ	Ksh 5,800,000.00
3 Bedroom with DSQ	Ksh 6,200,000.00

## APARTMENTS IN KITISURU (P053)



### LOCATION:

Kitisuru, off Lower Kabete

### DESCRIPTION:

3 Bedroom Apartments

### AMENITIES:

- Ample parking
- Borehole
- Cabro paved compound
- Perimeter wall with electric fence
- Master En-suite
- Lifts

### STATUS OF THE PROJECT:

Ready for occupation

### PRICE

TYPE	PLINTH AREA	PRICE FROM
3 bedrooms + DSQ	123 Sqm	Ksh 10,900,000.00
3 bedroom	112 Sqm	Ksh 9,500,000.00

## APARTMENTS IN RUAKA (P054)



### LOCATION:

Ruaka, opposite Joyland Supermarket

### DESCRIPTION:

2 and 3 Bedroom apartments

### AMENITIES:

- Borehole
- Solar water heating system
- Roof garden
- Electric fence along the perimeter
- CCTV and backup generator for security
- Clothes drying yard on roof
- Ample parking
- Lift
- Children's play area

### STATUS OF THE PROJECT:

Ready for occupation

### PRICE

TYPE	PRICE	INDICATIVE RENT
2 bedrooms	Ksh 7,500,000.00	Ksh 35,000.00
3 bedroom	Ksh 8,900,000.00	Ksh 40,000.00

## MAISONETTE IN SYOKIMAU (P055)



### LOCATION:

Syokimau, 900m from the tarmac from Mombasa Road

### DESCRIPTION:

The house has been converted into single rooms, bedsitters, and a one bedroom that are ideal for rental.

### STATUS OF THE PROJECT:

Ready for occupation

### PRICE

**Ksh 30,000,000.00**

## APARTMENTS IN MOUNTAIN VIEW (P059)



### LOCATION:

Along Waiyaki Way, opposite Mountain view Total Petrol Station in Mountain View area

### DESCRIPTION:

1,2 & 3 all en-suite apartments on 0.1025 acres

### AMENITIES:

- Ample Parking
- DSTV
- Rooftop Sitting Area
- Gym
- Rooftop Swimming pool
- Sentry Unit (Guard Station)
- Shower Cubicles
- Laundry Area
- Perimeter wall

### STATUS OF THE PROJECT:

Under construction

### PRICE

TYPE	PLINTH AREA	PRICE
1 Bedroom	50 sqm	Ksh 6,500,000.00
2 Bedroom	113 sqm	Ksh 10,000,000.00
3 Bedroom	140 sqm	Ksh 13,000,000.00
3 Bedroom + DSQ	150 sqm	Ksh 14,000,000.00



# COMMERCIAL PROPERTIES

## OFFICE SPACE IN UPPER HILL (P007)



### LOCATION:

Upper Hill Area

### DESCRIPTION:

An Ultra-modern, state of the art, 18 storey office block set on 1 acre

### AMENITIES:

- Conference facilities
- Banking Hall
- Access control
- Generator
- High speed Lifts
- CCTV Backed security
- ICT Structured Cabling
- 164 Parking Bays
- Access control

### STATUS OF THE PROJECT:

Ready for Occupation

### PRICE

Ksh 145,000.00 per sqm and Ksh 1,000,000.00 per Parking slot

## OFFICE SPACE IN WESTLANDS (P022)



### LOCATION:

Westlands, off Waiyaki Way

### DESCRIPTION:

3 office suites measuring a total of 420 sqm in a well-maintained office block in Westlands.

### AMENITIES:

- 6 High speed lifts
- 24 hour security
- Boundary Wall
- Electric fence
- Full back-up generator
- 6 Parking slots including visitors' parking
- Bore hole on site
- Reliable water supply

### STATUS OF THE PROJECT:

Completed and occupied

### PRICE

SPACE AVAILABLE	PLINTH AREA	PRICE	INDICATIVE RENT
Three office suites on Tower 2	1510 sqft	Ksh 18,000,000.00	Ksh 100.00 per sqft

## COMMERCIAL BUILDING IN NYERI (P029)



### LOCATION:

Nyeri Town in the CBD.

### DESCRIPTION:

4 Storey commercial building (Ground plus four floors) complete with basement parking

### AMENITIES:

- Connection to main water & electricity
- Overhead and basement water storage
- Kitchenette and washrooms for all floors
- High speed lifts

### STATUS OF THE PROJECT:

Ready for occupation

### PRICE

Ksh 150,000,000.00

## OFFICE SPACE ON MOMBASA ROAD (P034)



**LOCATION:**  
Mombasa Road next to Nextgen Mall

**DESCRIPTION:**  
4 units office space for sale

**AMENITIES:**

- Washrooms
- Ample parking
- Lifts
- CCTV Cameras
- Chute facilities
- Standby generator

**STATUS OF THE PROJECT:**  
Ready for occupation

### PRICE

**Ksh 11,000,000.00 each**  
Indicative Monthly Rent - Ksh 81,500.00 per month

## COMMERCIAL COMPLEX IN NAIROBI CBD (P062)



**LOCATION:**  
NCBD at the junction of Koinange Street and Monrovia Street

**DESCRIPTION:**  
A commercial Complex on an eighth of an acre plot comprising of seven levels and two roof extensions with a total build up area of 34,928 square feet

**AMENITIES:**

- Connection to electricity, sewer services and water mains
- Fire detection and fire-fighting equipment
- Two underground water tanks
- Ample parking

**STATUS OF THE PROJECT:**  
Ready for occupation

### PRICE

Accepting offers



# LAND & PLOTS



## RESIDENTIAL PLOTS IN KIKAMBALA (PL003)

**LOCATION:**  
Kikambala

**DESCRIPTION:**  
Eighth of an acre (50 X 100) residential plots

- AMENITIES:**
- Perimeter wall round the entire project
  - Electricity available for connection
  - Internal roads to murrum level
  - Bore hole and piped water to every plot
  - Sewer system (to link to a proposed treatment plant)
  - Storm water drainage.

**PRICE:**  
Ksh 2,200,000.00

## RESIDENTIAL PLOTS IN THIKA (PL004)

**LOCATION:**  
Off Thika-Gatanga Road.

**DESCRIPTION:**  
Quarter acre (100 X 100) residential plots

- AMENITIES:**
- Controlled development in a gated community
  - Red soil
  - Tarmacked and murrum graded roads
  - Perimeter wall
  - Distinct predetermined house designs

**PRICE:**  
Ksh 5,500,000.00 (Negotiable)

## RESIDENTIAL PLOTS IN THIKA (PL005)

**LOCATION:**  
Along Gatanga Road

**DESCRIPTION:**  
Blocks of land ranging from 5 acre blocks up to 115-acre blocks

- AMENITIES:**
- Murrum graded internal roads
  - Close proximity to Thika-Gatanga Road
  - Well drained red soils

**PRICE:**  
Ksh 14,500,000.00 per acre (Negotiable)

## MIXED USE LAND IN NGOLIBA, THIKA (PL010)

**LOCATION:**  
Ngoliba area off Thika Road near Kenchic area  
Access from the Thika – Garissa Highway is via the Makuyu – Ithanga – Gati-iguru Road (recently tarmacked) approximately 8Km in

**DESCRIPTION:**  
Various residential and commercial plots.

- AMENITIES:**
- Tarmac access from main road
  - Murrum level driveways
  - Proximity to KPLC connection point

TYPE	PRICE
Eighth of an acre	Ksh 800,000.00
Quarter of an acre	Ksh 1,025,000.00
Half an acre	Ksh 1,600,000.00
One acre	Ksh 2,900,000.00
Commercial Plots (40 X 80)	Ksh 1,100,000.00

## LAND IN KISERIAN (PL012)

**LOCATION:**  
In Olchoro Onyore, next to Oloonton Anglican Church  
Access from Kiserian Township is 4km via the Kiserian – Isinya Road and 10 Km into Onyore via a murrum road

**DESCRIPTION:**  
Eight acres of agricultural land on Free hold title

- AMENITIES:**
- Nearby electricity mains for connection
  - Water available from private boreholes
  - Immediate access to murrum standard roads

**PRICE:**  
Ksh 9,600,000.00

## LAND IN KAJIADO (PL014)

**LOCATION:**  
Kajiado Town near UMMA University approximately 1.5Km off Namanga Road in Dalalekutuk Area

**DESCRIPTION:**  
200 acres accessible via an all-weather road and on free hold title

**PRICE:**  
Ksh 3,660,000.00 per acre

## LAND IN KAJIADO (PL015)

**LOCATION:**  
Kajiado Town near Naisula School approximately 1.7Km off Namanga Road in Dalalekutuk Area

**DESCRIPTION:**  
120 acres accessible via an all-weather road and on free hold title

**PRICE:**  
Ksh 3,900,000.00 per acre

## LAND IN ISINYA – KISAJU AREA (PL016)

### LOCATION:

Isinya approximately 7 Km from Isinya Township and 800 M off the Isinya – Kiserian Road

### DESCRIPTION:

192 acres accessible via an all-weather road and on free hold title

**PRICE:**  
Ksh 3,900,000.00 per acre

## RESIDENTIAL PLOTS IN KAMITI AREA (PL017)

### LOCATION:

Kamiti in Kiambu County on Kamiti Forest Road off Ruiru Road and adjacent to Tatu City, fronting Mukuyu River

### DESCRIPTION:

Quarter acre plots for sale in a gated community

### AMENITIES:

- Connection to electricity and water mains
- Cabro paved driveways
- Streetlights
- Inbuilt electric A/C systems
- Proposed school
- Proposed Hospital
- Children playing area

**PRICE:**  
Ksh 7,000,000.00 per quarter

## RESIDENTIAL PLOTS IN THIKA (PL021)

### LOCATION:

Off Thika - Gatanga Road

### DESCRIPTION:

Eighth of an acre (50 X 100) residential plots, set in a secured, controlled and gated community

### AMENITIES:

- Murram graded internal roads
- Masonry and chain link perimeter
- Commercial zone fronting the road
- Predetermined house designs
- Street lighting
- Children's play area
- Jogging track and foot paths
- Red soils

**PRICE:**  
Ksh 2,700,000.00 for eighth of an acre plot  
Ksh 5,100,000.00 for quarter of an acre plot

## RESIDENTIAL PLOTS IN MERISHO, MATASIA (PL022)

### LOCATION:

Merisho Area, approximately 3km from Matasia Trading Centre

### DESCRIPTION:

Quarter of an acre (100 X 100) residential plots

### AMENITIES:

- Immediate access to murram standard roads
- Close proximity to schools, hospitals and other social amenities.
- Water from nearby connection points
- Nearby electricity mains for connection

**PRICE:**  
Ksh 4,500,000.00 (Negotiable)

## RESIDENTIAL PLOTS IN KITENGELA (PL026)

### LOCATION:

Kitengela 2 Km off Namanga Road and adjacent to Kampala International University

### DESCRIPTION:

1/8 Acre plots for sale

### AMENITIES:

- Fence and gate
- Controlled development
- Easy access
- Ready titles

**PRICE:**  
Ksh 1,300,000.00 for 1/8 of an acre

## LAND ALONG LIMURU ROAD (PL027)

### LOCATION:

Along Limuru Road at Redhill after Kiambu Road

### DESCRIPTION:

Block of 17.16 Acres of land

### AMENITIES:

- Proximity to shopping malls
- Ideal for commercial and residential developments
- Well drained red soil
- Access to electricity and water

**PRICE:**  
Accepting offers

## GOLF RESORT IN MAKUYU, MURANGA COUNTY (PL028)

### LOCATION:

Makuyu in Muranga county

### DESCRIPTION:

A golf estate comprising of plots ideal for residential, retirement and holiday homes, the project will be fully serviced.

### AMENITIES:

- Water and electricity
- A modern paved road network
- A comprehensive sewage system
- Internet connectivity
- CCTV and other internal security measures, including a fire station and a police post

### PRICE:

Ksh 4,500,000.00 for a quarter of an acre

## LAND FOR SALE IN MUTHAIGA (PL029)

### LOCATION:

Muthaiga North approximately 1.5 kms off Kiambu Road; turning off and to the right from Nairobi at Rock City Garden & borders Balozi Estate to the west

### DESCRIPTION:

9 acre piece of land

### AMENITIES:

- Touching tarmac
- Borehole on site
- Connection to electricity mains
- Perimeter wall fencing
- Indigenous trees on site

### STATUS OF THE PROJECT:

Ready for development or subdivision and sale as plots

### PRICE:

Accepting Offers

## PARTIALLY DEVELOPED LAND FOR SALE IN NGONG TOWN (PL030)

### LOCATION:

Shade Zone area, Ngong Town. Approximately 200 meters of Ngong Road branching off just before Shell Ngong and approximately 900 meters to Naivas Supermarket

### DESCRIPTION:

Partially developed quarter acre plot with a block of apartments comprising of 2 units of 2 bedroom each with possibility of further development of the plot

### AMENITIES:

- Ample Parking
- Reliable water, sewer and electricity
- Developed neighborhood

### STATUS OF THE PROJECT:

Ready for immediate development

### PRICE:

Accepting Offers

## COMMERCIAL PLOT IN NANYUKI (PL031)

### LOCATION:

Nanyuki Town (CBD)

### DESCRIPTION:

1/8th Acre commercial plot

### AMENITIES:

- Connection to power mains
- Access to banks, malls and social amenities
- Ideal for construction of commercial buildings or shopping complex

### PRICE:

Accepting Offers

## PRIME LAND IN SPRING VALLEY (PL043)

### LOCATION:

Adjacent to Spring Valley roundabout off Kabete road

### DESCRIPTION:

This is a prime 2.15 acres piece of Land in Spring valley.

### AMENITIES:

- Connection to electricity, water and sewer mains
- Possible access via 2 other roads – Shanzu Link and Shanzu Road
- Masonry perimeter walling round the entire property
- Fairly flat with a regular shape
- Red loamy soils and mature trees
- Strategically located near social amenities

### PRICE:

Accepting offers

## PRIME LAND FOR SALE IN KIKUYU (PL048)

### LOCATION:

Kikuyu Area, Kiambu County

### DESCRIPTION:

Available from 1 acre.

### AMENITIES:

- Close proximity to the Southern Bypass
- 3 km from Kikuyu Town
- Ideal for both residential and commercial use
- Connection to electricity and water mains
- Gently sloping, hence ideal for development
- Red soil

### PRICE:

From Ksh 48,000,000.00 per acre

## LAND IN ISINYA (PL050)

### LOCATION:

Located along Natendereti area, Kipeto Sublocation, Isinya.  
2.5Km from Isinya Shopping centre

### DESCRIPTION:

1 acre piece of land  
Ideal for immediate development or farming  
Title is freehold

### PRICE:

Ksh 4,500,000.00

## PLOTS FOR SALE IN RUIRU (PL051)

### LOCATION:

14 Kms (15 minutes drive) from Thika superhighway accessed through Ruiru town or Kimbo Junction

### DESCRIPTION:

Residential plots in a gated community

### AMENITIES:

- Perimeter fence
- Borehole
- Recreational Park & Children's playground
- Electricity available
- Upgrading of the main road to Bitumen standards

### PRICE:

Ksh 1,950,000.00 for 1/8 of an acre

## COMMERCIAL PLOT ON RHAPTA ROAD (PL057)

### LOCATION:

Raphta Road

### DESCRIPTION:

One acre of prime Land in Westlands that could be developed into an office block, residential apartments, a commercial center or a hotel.

### AMENITIES:

- Connection to sewer system
- Power supply
- Water connection
- Immediate access to Raphta Road
- Perimeter wall

### STATUS OF THE PROJECT:

Ready for immediate development

### PRICE:

Ksh 270,000,000.00

## LAND IN MOWLEM AREA (PL059)

### LOCATION:

300m off Komarock road in Mowlem area Nairobi and next to Tononoka Rolling Mills.

### DESCRIPTION:

24.85 Acres parcel of land that is rectangular shaped, fairly level and with mixed soil . Part of the land is enclosed with razor wire and electric fence while the rest is open.

### AMENITIES:

- Perimeter wall
- Electric Fence
- Scrap metal yard
- Workshop
- Office Block
- Control room

### PRICE:

Ksh 1,200,000,000.00

## LAND FOR SALE IN MAGANA AREA, THIKA (PL060)

### LOCATION:

Magana area, Kiambu county 4.6 Km off Thika Garissa Highway

### DESCRIPTION:

3-acre agricultural land within a residential neighborhood.

### STATUS OF THE PROJECT:

Ready for development freehold titles

### PRICE:

Ksh 4,100,000.00

## LAND FOR SALE IN WAKULIMA MARKET AREA (P062)

### LOCATION:

The property is situated along Haile sellasie road within Wakulima Market area, Nairobi City centre. It is located directly opposite Wakulima House and Wakulima Market

### DESCRIPTION:

- 1.02 Acres ready for development

### STATUS OF THE PROJECT:

Ready for immediate development

### PRICE:

Accepting Offers

## PLOTS FOR SALE IN KENANIE, MAVOKO (PL063)

### LOCATION:

Situated in Kenanie area, Lukenya.  
3.7 Kms from Mombasa Road

### DESCRIPTION:

Eighth acre plots with ready freehold titles

### AMENITIES:

Connection to electricity and water  
Ready Freehold Titles  
Access to the project is via well graded Murram road  
Less than 1 km to Tarmac

### STATUS OF THE PROJECT:

Ready for occupation

### PRICE:

Ksh 1,600,000.00 per eighth of an acre

## PLOTS FOR SALE AT KONZA (PL064)

### LOCATION:

The property is located Ilpolosat area of Kajiado county.  
The Branch off is to the right at Ketraco Konza substation along  
Katumani-Konza Road. Naserian Primary school and Festival  
Harvest Church osotus are notable Landmarks

### DESCRIPTION:

Eighth acre plots

### STATUS OF THE PROJECT:

Ready for immediate development

### PRICE:

Ksh 450,000.00



**Visit our physical Property Hub today at KUSCCO Centre – Ground Floor – Kilimanjaro Avenue, Upper Hill or visit our virtual hub [www.goodhome.co.ke](http://www.goodhome.co.ke) to view our available properties. Alternatively, you can call us on **0711049739** or **0711049696** to get more information on these properties as well as available financing options.**

**DISCLAIMER:**

The Co-operative Bank of Kenya Limited, its directors, partners, employees and related entities responsible for preparing this property listing believe that the information carried therein is correct. However, no representation or warranties of any nature whatsoever are given, intended or implied, and as such, you should rely on your own enquiries to the accuracy of the information or material available from this listing.

Please note that information provided on this listing is general information and is subject to change without notice and should not be relied upon as a substitute for legal, financial, real estate or other expert advice. The Co-operative Bank of Kenya Limited disclaims all liability and responsibility including negligence for any direct and or indirect loss or damage suffered by any person or company arising out of any use of the listing or any information or material available from it.

Thank  
You



**CO-OPERATIVE BANK**

We are you