



CO-OPERATIVE BANK

We are you



GOODHOME PROPERTY HUB

PROPERTY LISTING - AUGUST 2024



0711 049 739 | 0711 049 811 | 0711 049 674



CO-OPERATIVE BANK

We are you



Residential Properties



0711 049 739 | 0711 049 811 | 0711 049 674

August 2024



APARTMENTS AT SABAKI [P002]

LOCATION:

Sabaki, approximately 4.5Km off Mombasa Road from the Total Junction

DESCRIPTION:

Bedsitters, studio, 1 & 2 bedroom apartments

STATUS OF THE PROJECT:

Ready for occupation

AMENITIES:

- Children Playing Area
- Guard House
- Ample Parking
- Borehole
- Cabro-paved driveway

PRICE

TYPE	PLINTH AREA	PRICE	INDICATIVE RENT
Bedsitters	16 sqm	Ksh 1,155,000.00	Ksh 3,500.00
Studios	20 sqm	Ksh 1,760,000.00	Ksh 4,000.00
1 Bedroom	30 sqm	Ksh 2,530,000.00	Ksh 7,000.00
2 Bedroom	40 sqm	Ksh 3,190,000.00	Ksh 10,000.00

APARTMENTS & MAISONNETTES IN SYOKIMAU [P003]

LOCATION

Syokimau, approximately 800 metres off Mombasa Road before the Mlolongo Weighbridge

DESCRIPTION

2 and 3 bedroom apartments with master ensuite

STATUS OF THE PROJECT

Ready for occupation

AMENITIES

- Open Plan Kitchen
- Laundry Area
- Alarm System
- Perimeter Fencing
- Children's Play Area
- Controlled Access
- Ample Parking



TYPE	PLINTH AREA	PRICE (MORTGAGES)	INDICATIVE RENT
2 Bedroom	74 sqm	Ksh6,500,000.00	Ksh 22,000.00
3 Bedroom	96 sqm	Ksh 8,000,000.00	Ksh 25,000.00
3 Br Maisonette	--	Ksh 10,000,000.00	Ksh. 50,000.00

APARTMENTS IN RACECOURSE AREA [P004]

LOCATION

Racecourse Area, approximately 400 metres off Ngong Road

DESCRIPTION

Studios, 1 and 2 bedroom apartments

STATUS OF THE PROJECT

Ready for occupation

AMENITIES

- Large Central Garden
- Play Area
- Swimming Pool
- Borehole
- Commercial Area
- Nursery School
- Rooftop Garden
- Ample Parking



TYPE	PLINTH AREA	PRICE (MORTGAGES)	INDICATIVE RENT
Studios	25 sqm	Ksh 3,500,000.00	Ksh 20,000.00
Standard 1 Bedroom	37 sqm	Ksh 4,600,000.00	Ksh 30,000.00
Deluxe 1 Bedroom	40 sqm	Ksh 4,800,000.00	Ksh. 30,000.00
2 Bedroom	72 sqm	Ksh 7,800,000.00	Ksh 40,000.00
AirBnB Rates	--	Ksh 2,500.00 - Ksh 5,000.00	--

August 2024



APARTMENTS IN RUAKA [POO6]

LOCATION:

Ruaka, approximately 200 metres off Limuru Road on Mbanya Drive

DESCRIPTION:

2 and 3 bedroom apartments (Master Ensuite)

AMENITIES:

- Cabro-paved Driveways
- Swimming Pool
- Gym
- Green Areas
- Ample Parking
- Electric Fence
- Spacious Balconies
- CCTV

STATUS OF THE PROJECT:

Ready for occupation

PRICE

TYPE	PLINTH AREA	PRICE(MORTGAGES)	INDICATIVE RENT	CASH PRICE
2 Bedroom	82 sqm	Ksh 6,600,000.00	Ksh 35,000.00	Ksh 6,000,000.00
3 Bedroom	104 sqm	Ksh 8,600,000.00	Ksh 45,000.00	Ksh 8,000,000.00

APARTMENTS IN MOWLEM AREA (P010)

LOCATION

Mowlem area, 600 M off Kangundo Road

DESCRIPTION

1, 2 and 3 bedroom apartments

STATUS OF THE PROJECT

Ready for occupation

AMENITIES

- Ample Parking
- Commercial Centre
- Sentry Unit (Guard Station)
- Kindergarten
- Gym
- Perimeter Fencing
- DSTV
- Swimming Pool

TYPE	OLD PRICE	PROMOTIONAL PRICE	RENTAL RETURN
Studio	Ksh 4,000,000.00	Ksh 3,500,000.00	Ksh 13,500.00
1 Bedroom	Ksh 4,500,000.00	Ksh 3,800,000.00	Ksh 17,500.00
2 Bedroom	Ksh 6,000,000.00	Ksh 5,000,000.00	Ksh 27,500.00
3 Bedroom	Ksh 7,500,000.00	Ksh 6,000,000.00	Ksh 32,500.00



MAISONETTE IN LANG'ATA (P011)

LOCATION

Southlands Estate in Langata, Nairobi County

DESCRIPTION

3 Bedroom semi-detached Maisonette with a domestic servant quarter

STATUS OF THE PROJECT

Ready for occupation

AMENITIES

- Elevated Water Tank
- Dining Area
- Car Port
- Spacious Dining Area
- Cabro Paved Compound
- Connection to Electricity, Sewer Services and Water Mains

Ksh 17,000,000.00

August 2024



APARTMENTS IN PARKLANDS [P012]

LOCATION

Parklands, near The National Museums of Kenya

DESCRIPTION

Luxurious apartments in Parklands

STATUS OF THE PROJECT

Ready for occupation

AMENITIES

- High Speed Lifts
- Ample Parking
- Spacious Dining Area
- American Kitchen
- Spacious Lounge
- Pantry

TYPE	PRICE
2 Bedroom	Ksh 12,500,000.00
3 Bedroom	Ksh 13,000,000.00

APARTMENTS IN NGONG TOWN [P019]

LOCATION

Ngong Town, near the Co-operative Bank Branch, 400m off Ngong Road

DESCRIPTION

2 and 3 bedroom (Master Ensuite) apartments (30 units in total)

STATUS OF THE PROJECT

Ready for occupation

AMENITIES

- Lounge Dining Room
- Perimeter Fencing
- Fitted Kitchen
- Adequate Water Storage
- One Parking Slot per Apartment

TYPE	PLINTH AREA	PRICE	RENTAL INCOME
2 Bedroom	86 sqm	Ksh5,500,000.00	Ksh 27,000.00
3 Bedroom	103 sqm	Ksh 6,500,000.00	Ksh 32,000.00



ONE APARTMENT UNIT IN NYALI [P025]

LOCATION

Nyali, approximately 600M off Links Road

DESCRIPTION

3 bedroom (Master Ensuite) apartment on first floor

STATUS OF THE PROJECT

Ready for occupation

AMENITIES

- Borehole On Site
- Lounge Area
- Laundry Area
- Controlled Access
- Activated Rooftop(Terrace)
- Ample Parking
- Detached Servants Quarter

Ksh 13,000,000.00



August 2024



MANSION IN HARDY, KAREN [P030]

LOCATION

Hardy Area, Karen

DESCRIPTION

Double storey, 4 bedroom (all en-suite) town house, measuring 520 sqm, developed on half an acre

STATUS OF THE PROJECT

Ready for occupation

AMENITIES

- Ensuite DSQ
- Store Block
- Connection to Electricity and Water Mains
- Landscaped Gardens
- Gate House
- Gazebo

ACCEPTING OFFERS

BLOCK OF APARTMENTS, ELDORET [P033]

LOCATION

Located 200 meters off Eldoret - Malaba Highway.

DESCRIPTION

Newly constructed four storey building comprised of 1 bedroom (1 unit) and 2 bedrooms (15 units) apartments (Master Ensuite).

AMENITIES

- Kitchen Cabinets
- Murrum Access Road
- Close proximity to Eldoret town

STATUS OF THE PROJECT

Ready for occupation

PRICE - Ksh 50,000,000.00

RENTAL INCOME - Ksh 132,000.00



MAISONETTE ON MOMBASA ROAD [P039]

LOCATION

Along Mombasa Road at Sabaki

DESCRIPTION

4 bedroom (Master Ensuite) maisonette with a DSQ

STATUS OF THE PROJECT

Ready for occupation

AMENITIES

- Seperate Dining Area
- Cloakroom
- Children's Play Area
- Kitchen with pantry
- 3 bathrooms
- Water Storage Tank
- Laundry Area
- Parking Spaces for 2
- 24/7 Security



TYPE	PLINTH AREA	PRICE (MORTGAGES)	INDICATIVE RENT
4 Bedroom	160 sqm	Ksh 16,000,000.00	Ksh 50,000.00

August 2024



HOTEL APARTMENTS IN MTWAPA, KILIFI COUNTY [P048]

LOCATION

Mtwapa next to club Tropicana about 100 meters off Malindi Mombasa Road

DESCRIPTION

Hotel complex ready for daily bookings

STATUS OF THE PROJECT

Ready for Occupation

AMENITIES

- Borehole on Site
- Spacious Rooms
- Laundry Area
- Lounge Area
- Controlled Access
- Ample Parking
- Activated Rooftop(Terrace)
- DSQ

ACCEPTING OFFERS



A BLOCK OF APARTMENTS IN NYANCHWA AREA KISII [P050]

LOCATION

Kisii County, Nyanchwa

DESCRIPTION

5 storey block of flats comprising of 1 shop, 5 units of 1 bedroom flats & 9 units of 2 bedroom flats on 0.0711 of an acre

STATUS OF THE PROJECT

Ready for occupation

AMENITIES

- Mains for Electricity & Water Connected to the Property
- Drainage to Septic Tank/Sewer Line
- Area Is covered by Cellular Mobile Networks
- Floors are finished in Ceramic Tiles
- Close proximity to Kisii Town

PRICE	INDICATIVE RENT
Ksh 19,000,000.00	Ksh 180,000.00

APARTMENTS & TOWN HOMES IN KISAJU [P052]

LOCATION

Kisaju, off Namanga Road

DESCRIPTION

A modern estate sitting on 32 Acres comprising of 1, 2 & 3 Bedroom apartments and Townhouses with & without DSQ to complement your contemporary lifestyle in a tranquil environment away from the flurry of the city

AMENITIES

- Children Playground
- Electric Fence
- Cabro Paved Driveways
- Jogging Track
- Two Boreholes
- Retail & Commercial Centre
- Ample Parking
- Solar Water Heater

STATUS OF THE PROJECT

Ready for Occupation

TYPE	PRICE	TYPE	PRICE
1 Bedroom	Ksh 1,906,000.00	3 Bedroom without DSQ	Ksh 5,800,000.00
2 Bedroom	Ksh 3,200,000.00	3 Bedroom with DSQ	Ksh 6,200,000.00
3 Bedroom	Ksh 3,800,000.00		



August 2024

APARTMENTS IN KITISURU [P053]

LOCATION

Kitisuru, off Lower Kabete

DESCRIPTION

3 Bedroom Apartments (Master Ensuite)

STATUS OF THE PROJECT

Ready for occupation

AMENITIES

- Ample Parking
- Borehole
- Lifts
- Cabro paved compound
- Perimeter wall with Electric fence



TYPE	PLINTH AREA	PRICE
3 Bedroom + DSQ	123 sqm	Ksh 10,900,000.00
3 Bedroom	112 sqm	Ksh 9,500,000.00

APARTMENTS IN RUAKA [P054]

LOCATION

Ruaka, near Red Hill Road and Total Energies Ruaka

DESCRIPTION

2 and 3 Bedroom Apartments

STATUS OF THE PROJECT

Ready for occupation

AMENITIES

- Borehole
- Roof garden
- Ample parking
- Controlled access
- Solar Water Heating System
- Children's play area
- Electric Fence along the Perimeter
- High Speed internet
- CCTV and Backup Generator for Security
- High Speed Lift
- Clothes drying yard on roof

TYPE	PRICE FROM	RENT
2 Bedroom	Ksh 6,800,000.00	Ksh 40,000.00
3 Bedroom	Ksh7,950,000.00	Ksh 50,000.00



MAISONETTE IN SYOKIMAU [P055]

LOCATION

Syokimau, 900m from the tarmac from Mombasa Road

DESCRIPTION

The house has been converted into single rooms, bedsitters, and a 1 bedroom that are ideal for rental.

STATUS OF THE PROJECT

Ready for Occupation

Ksh 30,000,000.00



August 2024



PRIME BLOCK OF APARTMENTS IN SHANZU [P064]

LOCATION

Situated in Shanzu, 1.5 km from Whitesands Beach Hotel and 100 meters off Mombasa Malindi Highway.

AMENITIES

- Swimming Pool
- Water & Water Tanks
- Power
- Perimeter Wall with Electric Fence
- Car Park

DESCRIPTION

1 and 2 bedroom apartments

STATUS OF THE PROJECT

Ready for occupation

PRICE	INDICATIVE RENTAL INCOME
Accepting Offers	Ksh 550,000.00

APARTMENT IN LAVINGTON AREA [P065]

LOCATION

Situated on the 7th floor of the Pearl Residence on Oloitoktok Road, opposite the Methodist Resort and Conference Centre

DESCRIPTION

3 bedroom (all en-suite), fully furnished apartment with a servant's room measuring 241 sqm (2,600 sqft)

AMENITIES

- Kitchen with Balcony and Pantry
- Laundry Area
- Contemporary Furniture Designs
- Quality Tile Flooring
- Gypsum Textured Ceiling
- Separate Servant's Quarter
- Access Heated Swimming Pool
- Mini Theatre
- Borehole on site
- High Speed Lifts
- Banquet Hall and Common Kitchen
- Vinyl Matte Finished Walls
- High-tech appliances
- Standard Light fittings
- Concealed Plumbing
- Wallpaper Finishing & play zone for children
- Security with CCTV Cameras
- Security Access control into property
- Car registration Reader
- Centralized Property Man
- Back-up Generator for all Houses
- Separate Elevator from Basement to 1st Floor Level for Security purposes.
- Fitted Standard Equipment - TV, Music System, Washing Machine
- 2 parking slots per House

STATUS OF THE PROJECT

Ready for Occupation

PRICE	RENTAL RETURN
Ksh 26,000,000.00 (Negotiable)	Ksh 140,000.00 (Service charge inclusive)



August 2024

APARTMENTS IN NGARA WEST AREA [P066]

LOCATION

Along Mushebi Road in Ngara West, opposite Stima Investment Co-operative Plaza, with a quick and direct access to the Nairobi Central Business District

DESCRIPTION

This is an off-plan housing project comprising of studios (18sqm) and 1 bedroom units (32.5 sqm)

AMENITIES

- Ample Parking
- Borehole & Water Storage
- A mini-commercial centre
- Roof top Terrace
- Backup Generator
- Two High Speed Lifts
- Gym
- Balcony on all Bedrooms
- Boundary Wall with Electric fence
- CCTV Surveillance
- Refuse Room
- Internet Ready Apartments
- Two Fire Escapes

STATUS OF THE PROJECT

Under Construction

PRICE: CASH OPTION

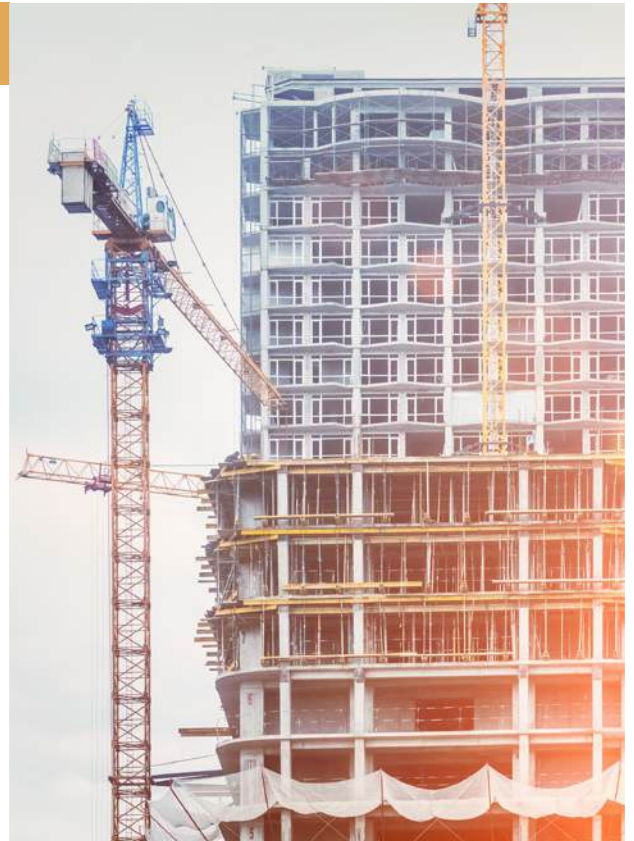
TYPE	SELLING PRICE	BOOKING DEPOSIT (25%)	PAYMENT WITHIN 30 DAYS 75%
1 Bedroom	Ksh 4,600,000.00	Ksh 1,150,000.00	Ksh 3,450,000.00

PRICE: MORTGAGE OPTION

TYPE	SELLING PRICE	ON OR BEFORE SIGNING AGREEMENT (25%)	BALANCE ON COMPLETION
1 Bedroom	Ksh 4,750,000.00	Ksh 1,187,000.00	Ksh 3,563,000.00

PRICE: INSTALMENT OPTION

TYPE	SELLING PRICE	25% BOOKING ON DEPOSIT	50% DURING CONSTRUCTION	25% ON COMPLETION
1 Bedroom	Ksh 4,850,000.00	Ksh 1,212,500.00	Ksh 2,425,000.00	Ksh 1,212,500.00



August 2024



RESIDENTIAL APARTMENTS AND COMMERCIAL SPACE IN UPPER HILL [P067]

LOCATION

On Chyulu Road- Mara Road junction in Upperhill, Nairobi

DESCRIPTION

Modern high quality 2 and 3 bedroom apartments that are strategically located and ideal for use as furnished and unfurnished residential suites and office spaces. The property also includes a commercial complex with other office spaces.

AMENITIES

- Ample Parking
- Spacious Kitchen with Pantry
- High Speed Lifts
- Borehole Water
- Two Balconies
- 24-hour Security
- Controlled Access
- Spacious Living Rooms
- Spacious 2 and 3 Bedrooms (all en-suite).

STATUS OF THE PROJECT

Ready for Occupation

TYPE	PRICE
2 Bedroom (All Ensuite)	Ksh 15,600,000.00
3 Bedroom (All Ensuite)	Ksh 17,500,000.00
Commercial Space	Ksh 13,800 per square foot

APARTMENT IN KILELESHA [P069]

LOCATION

Along Kikambala Road, Kileleshwa, Nairobi, Kenya

DESCRIPTION

Luxurious apartment complex with spacious and comfortable 2 bedroom, 1 bedroom, and studio apartment units, complete with fully fitted kitchens.

AMENITIES

- Solar water heater
- Rooftop Lounge Deck
- Rooftop Barbecue
- Fully Fitted Gym
- Video Intercom
- Multiple Balconies
- High Speed Lifts
- 24 hour Security
- Backup Generator Borehole
- Electric Fence
- Borehole

STATUS OF THE PROJECT

Under Construction

TYPE	PLINTH AREA (SQM)	PRICE FROM
Studio	47.9	Ksh 8,000,000.00
1 Bedroom	57.1	Ksh 10,500,000.00
2 Bedroom	119.9 & 136.6	Ksh 16-17 Million

RENTAL INCOME	STUDIO	1 BEDROOM	2 BEDROOM DUPLEX
Unfurnished(Monthly)	Ksh 60,000.00	Ksh 75,000.00	Ksh 110,000.00
Furnished(Monthly)	Ksh 100,000.00	Ksh 135,000.00	Ksh 175,000.00
Airbnb(Daily Rates)	Ksh 5,000.00	Ksh 6,000.00	Ksh 7,000.00



August 2024



VILLA IN THOGOTO AREA [P070]

LOCATION

In Thogoto area Kiambu County slightly past Shell Petrol Station- Gikambura about 130 Metres off Dagoreti Road

DESCRIPTION

A 3 bedroom flat roofed villa with modern finishes on a fairly flat rectangular Plot. Extra land or plot for further development.

AMENITIES

- Roof Terrace
- Water & Electricity mains connected to property
- Perimeter Wall.
- Well lit Rooms with huge windows.

STATUS OF THE PROJECT

Ready for Occupation

TYPE	PRICE
Villa	Ksh 14,000,000.00
Villa & Extra Undeveloped Land	Ksh 20,000,000.00

APARTMENTS IN MLOLONGO AREA [P071]

LOCATION

Along Beijing Road off Mombasa Road in Mlolongo area

DESCRIPTION

2 Bedroom apartments in a gated community.

STATUS OF THE PROJECT

Ready for occupation

AMENITIES

- Connection to electricity, water and sewer
- Ample parking
- Cabro paved road.
- Controlled access
- Shopping centre
- Perimeter Fencing
- School

Ksh 4,800,000.00





CO-OPERATIVE BANK

We are you



Commercial Properties



0711 049 739 | 0711 049 811 | 0711 049 674

August 2024



OFFICE SPACE IN UPPER HILL [P007]

LOCATION

Upper Hill Area

DESCRIPTION

An ultra-modern, state of the art, 18 storey office block set on 1 acre.

STATUS OF THE PROJECT

Ready for occupation

AMENITIES

- Conference Facilities
- CCTV Backed Security
- High Speed Lifts
- Access Control
- Banking Hall Access Control
- ICT Structured Cabling
- 164 Parking Bays
- Generator

KSH 145,000.00 PER SQM AND KSH 1,000,000.00 PER PARKING SLOT

OFFICE SPACE IN WESTLANDS [P022]

LOCATION

Westlands, off Waiyaki Way

DESCRIPTION

3 office suites, measuring a total of 420 sqm, located in a well-maintained office block.

STATUS OF THE PROJECT

Ready for occupation

AMENITIES

- 6 High Speed Lifts
- 24 Hour Security
- Perimeter Fencing
- Electric Fence
- Back-up Generator
- Borehole On Site
- 6 Parking Bays Including Visitors' Parking
- Reliable Water Supply

TYPE	PLINTH AREA	PRICE	INDICATIVE RENT
3 Office Suites on Tower 2	1510 sqm	Ksh18,000,000.00	Ksh 100.00 per sqft



OFFICE SPACE ON MOMBASA ROAD [P034]

LOCATION

Mombasa Road next to Nextgen Mall

DESCRIPTION

4 units office space for sale

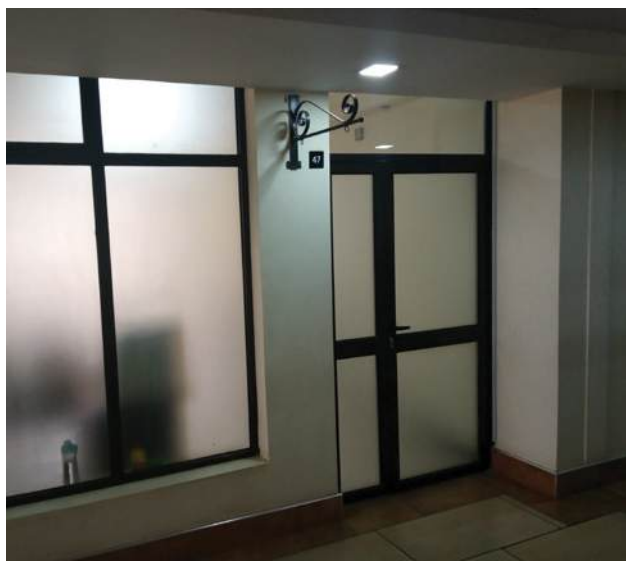
STATUS OF THE PROJECT

Ready for occupation

AMENITIES

- Washrooms
- Ample Parking
- Lifts
- Chute Facilities
- CCTV Cameras
- Standby Generator

PRICE	INDICATIVE RENT
Ksh 11,000,000.00 each	Ksh 81,500.00 per month



August 2024



COMMERCIAL COMPLEX IN NAIROBI CBD [P062]

LOCATION

NCBD at the junction of Koinange Street and Monrovia Street

DESCRIPTION

A commercial complex on an eighth of an acre plot comprising of seven levels and two roof extensions with a total build up area of 34,928 square feet

STATUS OF THE PROJECT

Ready for occupation

AMENITIES

- Connection to Electricity, Sewer Services and Water Mains
- Two Underground Water Tanks
- Fire Detection And Fire-fighting Equipment
- Ample Parking

ACCEPTING OFFERS

COMMERCIAL COMPLEX IN SPRING VALLEY [P060]

LOCATION:

In Spring Valley along Kabete Road in a quiet and convenient area, right opposite Spring Vallley Police Station

DESCRIPTION:

A commercial block comprising of four levels with a total build up area of 18,481 square feet.

AMENITIES:

- Electricity, sewer and water mains connection
- Ample parking
- Fiber Connectivity
- 2 dedicated lifts

STATUS OF THE PROJECT:

Ready for occupation

ACCEPTING OFFERS



DEVELOPED COMMERCIAL BLOCK IN RUIRU [P061]

LOCATION:

Ruiru about 17Kms from Superhighway & 1Km from Kibicho trading centre opposite JG Kiereini Boys Secondary School

DESCRIPTION:

3 storey block comprising of 14 rooms and a separate two storey block. 2 Ablution blocks & a playground

AMMENITIES:

- Electricity Connection
- Playground
- Perimeter wall
- Kitchen
- Septic Drainage Tank
- Borehole water

SUITABLE FOR:

- Rental Houses
- School
- Any other commercial activity

STATUS OF THE PROJECT:

Ready for occupation

Ksh 27,500,000.00

August 2024



COMMERCIAL COMPLEX IN NYERI [P072]

LOCATION

Commercial property situated off Nyeri Kiganjo Road, 2KM from Nyeri CBD

AMENITIES

- Connection to water and electricity mains.
- Perimeter Wall.
- Septic drainage tank

DESCRIPTION

3 distinctive adjacent parcels of land totalling to 1.3 Acres with a 3 Storey office block and other temporary structures.

SUITABLE FOR

Institutional use e.g School, Hospital etc

ACCEPTING OFFERS

COMMERCIAL PROPERTY IN NAKURU COUNTY [P076]

LOCATION

The property is located along Nakuru-Nairobi Highway in Nakuru county about 1.72 km slightly past the State House Nakuru.

AMENITIES

- Direct access lines to Nairobi Road and Railway
- Trunk sewerage system
- Piped water mains and Electricity
- Connection to Internet and telephone mains
- Underground tank
- Storm water drainage
- Fire fighting equipments
- Ample parking

DESCRIPTION

On a rectangular shaped plot facing the Nairobi Highway. Four storey commercial building parking and offices/shops.

STATUS OF THE PROJECT

Ready for occupation

ACCEPTING OFFERS





CO-OPERATIVE BANK

We are you



Land & Plots



0711 049 739 | 0711 049 811 | 0711 049 674

August 2024

RESIDENTIAL LAND IN THIKA [PL005]

LOCATION

Along Gatanga Road

DESCRIPTION

Blocks of land ranging from 5 acre blocks up to 115-acre blocks

AMENITIES

- Murram graded internal roads
- Close proximity to Thika-Gatanga Road
- Well Drained Red Soils

KSH 14,500,000.00 PER ACRE (NEGOTIABLE)

PLOT IN RUIRU [PL006]

LOCATION

Mwalimu Farm area of Ruiru, Kiambu County. Located 1.5 km off the Northern bypass, deviating west of Joska Shopping Centre

DESCRIPTION

Block of 8 acres of land being sold per 1 acre

AMENITIES

- Freehold title
- Water and electricity available for immediate connection
- Murram graded roads
- Proximity to a shopping centre

STATUS

Ready for immediate development

KSH 4,000,000.00 PER ACRE (NEGOTIABLE)

MIXED USE LAND IN NGOLIBA, THIKA [PL010]

LOCATION

Ngoliba area off Thika Road near Kenchic. Access from the Thika – Garissa Highway is via the Makuyu – Ithanga – Gatiiguru Road (recently tarmacked) approximately 8 km

DESCRIPTION

Various residential and commercial plots.

AMENITIES

- Tarmac access from main road
- Murram level driveways
- Proximity to KPLC connection point

KSH 850,000.00 PER EIGHTH OF AN ACRE

LAND FOR SALE IN KAJIADO [PL014]

LOCATION

Kajiado Town near UMMA University approximately 1.5 KM off Namanga Road in Dalalekutuk Area

DESCRIPTION

200 acres accessible via all-weather road and on free hold title

KSH 3,660,000.00 PER ACRE

LAND IN KAJIADO [PL015]

LOCATION

Kajiado Town near Naisula School approximately 1.7Km off Namanga Road in Dalalekutuk Area

DESCRIPTION

120 acres accessible via an all-weather road and on free hold title

KSH 3,900,000.00 PER ACRE

LAND FOR SALE IN KISAJU AREA [PL016]

LOCATION

Isinya approximately 7 km from Isinya Township 800m off the Isinya - Kiserian road

DESCRIPTION

192 acres accessible via an all-weather road and on free hold title

KSH 3,900,000.00 PER ACRE

August 2024

RESIDENTIAL PLOTS NEAR TATU CITY [PL017]

LOCATION

In Kamiti area of Kiambu off the Kiambu – Ruiru Road, adjacent to Tatu City and Mukuyu River

DESCRIPTION

Quarter acre plots for sale in a gated community

AMENITIES

- Proximity to water and electricity mains for connection
- Proposed cabro paved drive and walk-ways
- Proposed street lighting
- Proposed common grounds and children's play areas
- Well drained red soils
- Gatehouse and main trunk roads under construction

KSH 9,000,000 PER QUARTER ACRE

PLOTS IN MERISHO MATASIA [PL022]

LOCATION

Merisho Area, approximately 3km from Matasia Trading Centre

DESCRIPTION

Quarter of an acre residential plots

AMENITIES

- Touching the recently tarmacked Merisho – Matasia Road
- Proximity to schools, hospitals and other social amenities
- Water and electricity available for connection

STATUS

Ready for immediate development with ready free hold titles for each plot

RESIDENTIAL -KSH 6,000,000.00 QUARTER ACRE PLOT

COMMERCIAL -KSH 6,500,000.00 QUARTER ACRE PLOT

RESIDENTIAL PLOTS IN KITENGELA [PL026]

LOCATION

Kitengela, 2 Km off Namanga Road and adjacent to Kampala International University

DESCRIPTION

Eighth Acre plots for sale

AMENITIES

- Fence and gate
- Controlled development
- Easy access
- Ready titles

KSH 1,300,000.00 FOR EIGHTH OF AN ACRE

LAND ALONG LIMURU ROAD [PL027]

LOCATION

Along Limuru Road at Redhill after Kiambu Road

DESCRIPTION

Block of 17.16 acres of land

AMENITIES

- Proximity to shopping malls
- Ideal for commercial and residential developments
- Well drained red soil
- Access to electricity and water

ACCEPTING OFFERS

LAND FOR SALE IN MAKUYU, MURANGA COUNTY [PL028]

LOCATION

Makuyu in Murang'a county

DESCRIPTION

972 acre parcel of land ideal for subdivision for residential and holiday homes, institutional use or large scale farming or mixed use developments

AMENITIES

- Water and electricity within the property ready for connection
- Murram grade roads within the property
- Touching tarmac
- Well drained red soils
- Strategically located dam within the property
- Scenic views of the Mwea Plains

ACCEPTING OFFERS

PARTIALLY DEVELOPED LAND FOR SALE IN NGONG TOWN [PL030]

LOCATION

Zambia/Elpaso area of Ngong approximately 200metres off Ngong Road branching off from just before Shell Petrol Station and approximately 900 metres from Naivas (Vet) Supermarket

DESCRIPTION

Partially developed quarter acre plot with a block of apartments comprising of 2 units of 2 bedroom each with possibility of further development of the plot

AMENITIES

- Ample Parking
- Reliable water, sewer and electricity
- Developed neighborhood

STATUS

Ready for immediate development with ready free hold titles for each plot

ACCEPTING OFFERS

August 2024

COMMERCIAL PLOT IN NANYUKI [PL031]

LOCATION

Nanyuki Town (CBD)

DESCRIPTION

Eighth acre commercial plot

AMENITIES

- Connection to power mains
- Access to banks, malls and social amenities
- Ideal for construction of commercial buildings or shopping complex

ACCEPTING OFFERS

INDUSTRIAL LAND FOR SALE IN MLOLONGO [PL032]

LOCATION

Off Mombasa Road and along old Mombasa Road Mlolongo area, Machakos county

DESCRIPTION

5.399 acre parcel of land

AMENITIES

- Mains electricity available
- Water and sewer connection available from immediate neighborhood
- Perimeter wall

STATUS

Ready for immediate development

ACCEPTING OFFERS

PRIME LAND IN SPRING VALLEY [PL043]

LOCATION

Adjacent to Spring Valley roundabout off Kabete road

DESCRIPTION

This is a prime 2.15 acres piece of Land in Spring valley

AMENITIES

- Connection to electricity, water and sewer mains
- Possible access via 2 other roads – Shanzu Link and Shanzu Road
- Masonry perimeter walling round the entire property
- Fairly flat with a regular shape
- Red loamy soils and mature trees
- Strategically located near social amenities

ACCEPTING OFFERS

PLOTS FOR SALE IN NAIROBI CBD [PL044]

LOCATION

Nairobi CBD Utalii Street

DESCRIPTION

Two vacant plots measuring 0.0396 ha and 0.1146 ha respectively

ACCEPTING OFFERS

LOCATION

Lanet Tubuga area, about 300 metres off Lanet - Dundori Tarmac Road and about 500 metres to the north-west

DESCRIPTION

1.0165 acres

ACCEPTING OFFERS

LAND IN ISINYA [PL050]

LOCATION

Located along Natendereti area, Kipeto Sublocation, Isinya. 2.5Km from Isinya Shopping centre

DESCRIPTION

1 acre piece of land

STATUS

Ready for immediate development

KSH 4,500,000.00

PLOTS FOR SALE IN RUIRU KIBICHOI AREA [PL051]

LOCATION

14 Kms (15 minutes drive) from Thika Superhighway accessed through Ruiru town or Kimbo Junction

DESCRIPTION

Residential plots in a gated community(Phase 2)

AMENITIES

- Perimeter fence
- Borehole
- Recreational park and children's playground
- Electricity available
- Tarmacked main road

KSH 1,495,000.00 FOR EIGHTH OF AN ACRE

August 2024

LAND IN MOWLEM AREA [PL059]

LOCATION

300m off Komarock road in Mowlem area Nairobi and next to Tononoka Rolling Mills

DESCRIPTION

24.85 Acres parcel of land that is rectangular shaped, fairly level and with mixed soil . Part of the land is enclosed with razor wire and electric fence while the rest is open

AMENITIES

- Perimeter wall
- Office Block
- Workshop
- Electric Fence
- Control room
- Scrap metal yard

ACCEPTING OFFERS

LAND FOR SALE IN WAKULIMA MARKET AREA [PL062]

LOCATION

The property is situated along Haile Selassie Road within Wakulima Market area, Nairobi City Centre. It is located directly opposite Wakulima House and Wakulima Market

DESCRIPTION

1.02 Acres

STATUS

Ready for immediate development

ACCEPTING OFFERS

PLOTS FOR SALE AT KONZA [PL064]

LOCATION

In Ilpolosat area of Kajiado county. The branch off is to the right at Ketraco Konza substation along Katumani-Konza Road. Notable landmarks also include Naserian Primary School and Festival Harvest Church, Osotus

DESCRIPTION

Eighth acre plots

STATUS

Ready for immediate development

PHASE 2- 350,000.00 PER EIGHTH ACRE PLOT

LAND IN ISINYA [PL067]

LOCATION

Within Isinya Area, Kajiado County, approximately 1.5 kilometres off Pipeline (Isinya – Kiserian) Road, branching left before Parantai National Oil Petrol Station and approximately 400 metres to the South of Technosteel Industries Limited

DESCRIPTION

100 acres available in bulk or portions of 10.85 acres, 14.1 acres, 20 acres, 25.1 acres, 30 acres

ACCEPTING OFFERS

PRIME PLOTS FOR SALE IN THIKA [PL068]

LOCATION

Within a gated Golf Estate in Thika area, Kiambu County

DESCRIPTION

Prime serviced eighth-acre plots

AMENITIES

- Water and Electricity mains for connection
- Cabro-paved Drive and Walk-ways
- Well Drained Red Soils
- Gatehouse

STATUS

Ready for immediate development

KSH 7,000,000.00 PER EIGHTH ACRE PLOT

PLOTS FOR SALE AT MIGAA [PL069]

LOCATION

The plots are within Migaa gated community and are available for immediate development of residential houses

DESCRIPTION

Prime serviced eighth-acre plots

AMENITIES

- Water
- Connection to electricity
- Security
- Internet

STATUS

Ready for immediate development

KSH 4,500,000.00 PER 1/8 ACRE

August 2024

PLOTS IN NAIVASHA [PL070]

DESCRIPTION

Prime serviced plots along Moi South Lake Road

AMENITIES

- Piped water and electricity
- All Weather roads
- Street Lighting
- CCTV-24 hr Security
- Close proximity to SGR/MGR terminal
- Swimming pool
- Gym

STATUS

Ready for immediate development

1 ACRE - KSH 15,000,000

1/2 ACRE - KSH 8,000,000

1/4 ACRE - KSH 5,000,000

PLOTS FOR SALE AT ATHI RIVER [PL071]

LOCATION

Athi River opposite Kenya Meat Commission(KMC) at Mutongoni Rd approximately 3.4 KM off Mombasa Road

DESCRIPTION

Serviced eighth acre plots

AMENITIES

- Water
- Connection to electricity.

STATUS

Ready for immediate development

KSH 2,500,000.00 PER 1/8 ACRE

PLOTS ON MAAI MAHIU-NAIVASHA ROAD [PL072]

LOCATION

Along Naivasha -Maai Mahiu Road

DESCRIPTION

Serviced eighth acre plots

AMENITIES

- Piped Water
- Electricity
- Close proximity to SGR terminal

STATUS

Close proximity to SGR terminal

KSH 900,000.00 PER 1/8 ACRE

PRIME PLOTS FOR SALE IN SYOKIMAU [PL073]

LOCATION

Syokimau approximately 500m off Mombasa Road before Mlolongo Weigh Bridge

DESCRIPTION

2 Acres prime land for development. Fully Serviced Plot

AMENITIES

- Access to water, power and sewer connection.
- Close proximity to tarmac road

ACCEPTING OFFERS

PLOTS FOR SALE IN KOMA MACHAKOS COUNTY [PL074]

LOCATION

The Property is in Koma Area, Machakos County, touching recently tarmacked Kenol - Koma Road, off Kangundo Road

DESCRIPTION

19 acres block of land subdivided into eighths totalling to 151 plots for both commercial and residential use

AMENITIES

- Controlled development.
- Steel gate with a guard house
- Fencing around property
- Graded roads.
- Power.
- Water.
- Ready Titles.

STATUS

Ready for development

RESIDENTIAL 1/8 ACRE FOR KSH 1,500,000.00

COMERCIAL 1/8 ACRE FOR KSH 2,000,000.00

LAND IN WESTLANDS [PL075]

LOCATION

Along Raphta Road in Westlands, Nairobi

DESCRIPTION

Quarter acre gently sloping rectangular shaped parcel of land

AMENITIES

- Electricity and water connected
- Trunk sewer services

STATUS

Ready for development

SUITABLE FOR

- Hospitality industry related functions
- Commercial development
- High end residential development

ACCEPTING OFFERS

AUGUST 2024

Thank you!



CO-OPERATIVE BANK
We are you

Visit our physical Property Hub today at KUSCCO Centre
Ground Floor – Kilimanjaro Avenue, Upper Hill or
our virtual hub www.goodhome.co.ke to view available properties.

Alternatively, call us on
0711 049 739, 0711 049 811 or 0711 049 674
or e-mail us at coopmortgagepropertyhub@co-opbank.co.ke to
get more information on these properties as well as available
financing options.

DISCLAIMER:

The Co-operative Bank of Kenya Limited, its directors, partners, employees and related entities responsible for preparing this property listing believe that the information carried therein is correct. However, no representation or warranties of any nature whatsoever are given, intended or implied, and as such, you should rely on your own enquiries to the accuracy of the information or material available from this listing.

Please note that information provided on this listing is general information and is subject to change without notice and should not be relied upon as a substitute for legal, financial, real estate or other expert advice. The Co-operative Bank of Kenya Limited disclaims all liability and responsibility including negligence for any direct and or indirect loss or damage suffered by any person or company arising out of any use of the listing or any information or material available from it.